



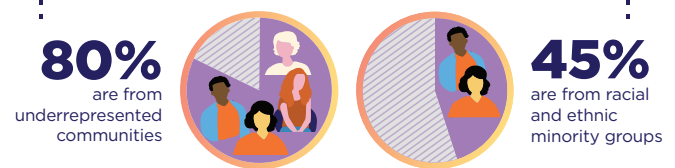
Credit: Office of Intramural Training & Education
National Institutes of Health

Become an *All of Us* Researcher

The *All of Us* Research Program is working to enroll one million or more participants across the U.S. to share data that can fuel new insights into human health. By engaging the participation of people and communities who have been left out of medical research in the past, and making their data available to a diverse cohort of researchers, the program seeks to accelerate health and medical research to enable individualized prevention, treatment, and care.

One of the largest, richest, most diverse biomedical data sets ever built

372,000+ Participants



Combines biological factors, genomics, and social determinants
on a large, inclusive scale, capturing a wide variety of data types.

DATA AVAILABLE IN THE RESEARCHER WORKBENCH



372,000+
Survey Responses



306,000+
Physical Measurements



258,000+
Electronic Health Records (EHR)



165,200
Genotyping Arrays



98,600
Whole Genome Sequences



12,800+
Fitbit Records



Participant biosamples are forthcoming.

Access and Tools

The program's expansive dataset lives on a secure, cloud-based platform that registered researchers across a wide range of settings and career stages can easily access with a computer and internet connection. Data are curated into research datasets with tiered access.



Public Tier data is available to anyone at **ResearchAllOfUs.org**. Users can explore aggregated overviews and interactive data previews—with identifiers removed—through the **Data Browser***.



Registered Tier data is available to researchers with institutional sign-off and login.gov credentials. Privacy and security safeguards, such as the removal of direct identifiers, have been applied to this data to protect participant privacy.



Controlled Tier data is available to registered users with amended institutional agreements who have completed Responsible Conduct of Research training. It includes expanded demographics, genomic data derived from WGS and array genotyping, COVID-19, EHR data, and more. Researchers can explore publicly available overviews of genomic data in the **Data Browser**.

The Researcher Workbench is currently supported by R, Python, Hail, and PLINK, widely-used open-source platforms for statistical analysis and data science. Tools and resources for researchers include:



Workspaces



Notebooks



Dataset Builder



Cohort Builder



User Support Hub

*Counts and percentages in the Data Browser and Researcher Workbench may vary based on the lag time associated with the data curation process under the program's rigorous privacy protections.



Transformative research potential

- Conduct **prospective, retrospective, and cross-sectional** analyses
- Develop improved **risk assessment and prevention strategies** to preempt disease
- **Investigate health disparities** and find new approaches to **improve** health equity
- Provide **earlier and more accurate diagnoses** to reduce illness burden
- Increase **wellness and resilience**, and promote healthy living
- Create a line of sight to enable new precision **treatments and interventions**

Learn how other researchers are using the data by browsing the **Research Projects Directory** and **Spotlights**.

Ready to get started? Register for access.

Visit **ResearchAllOfUs.org** to:

- Explore the data and projects
- Become a registered researcher

Connect with *All of Us*    

