

Why I practice in Neurology....

and you should too

ALLYSON HAMACHER, PA-C, RD

MAYO CLINIC

PHOENIX, AZ

Neurology Practice

WHAT IT IS

A thorough history and physical

Implementation of localization skills

Procedures (nerve blocks, LPs, Botox injections, device interrogations)

Interesting, mentally stimulating detective work



1. National Commission on Certification of Physician Assistants, Inc. (2022, September). 2021 Statistical Profile of Certified Physician Assistants by Specialty: An Annual Report of the National Commission on Certification of PAs. Retrieved Date, www.nccpa.net/resources/nccpa-research/

Salary

Inpatient typically > outpatient

Inpatient may include compensation for call, differential for shifts

Outpatient may include bonuses, productivity pay

Years of Experience	Salary in \$ (no bonus)
1-4 years	100,000-120,000
5-9 years	103,000-128,000
10+ years	109,000-140,000

2022. 2022 AAPA Salary Report. American Academy of Physician Associates.

Inpatient Neurology PA Overview

Inpatient Coverage

Two services (general and stroke)

Four PAs

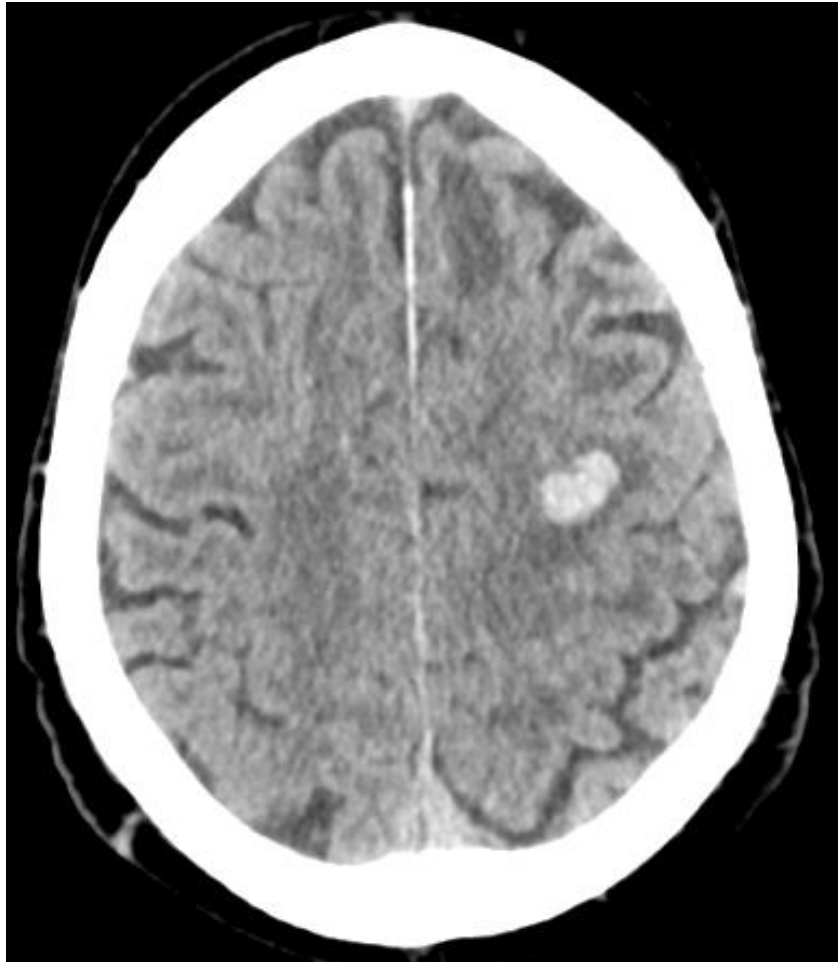
- Plus: neurology residents, HIM residents, PA fellows, PA students, medical students

Schedule

Four 10-hour shifts per week

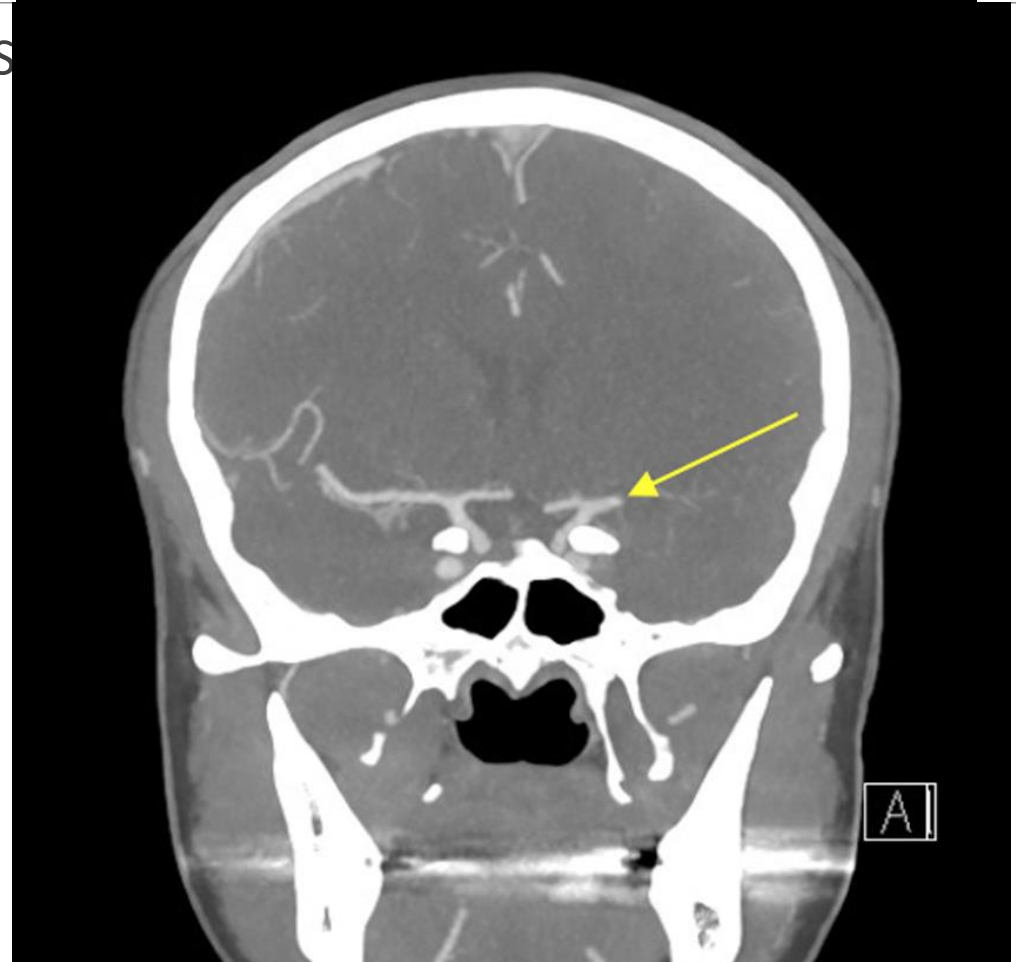
- 7-5 x 3 and 9-7 x 1
- ½ day Saturday every month

Typical Inpatient Day – Stroke



right

asia, gaze
numbness).



Typical Inpatient Day – General



1100: patient admitted for thunderclap headache evaluation.

1300: ED consult for postpartum onset of depression on sertraline, with active enteral THC use who has experienced multiple thunderclap headaches with exertion over the past 24 hours. Neurologic exam normal

1430: admitted for acute change

1500: negative for acute change

1600: negative for dissociation, xanthochromia or abnormalities

1630: performed in ED negative for xanthochromia or abnormalities

1700: end of shift

1100: patient admitted for thunderclap headache evaluation.



Tips for Clinical Rotations

Review the neurologic examination – and practice, practice, practice

Have a good reflex hammer – or ask to borrow one

Find resources to help you prepare – ask your preceptor

- [Neuro exam](#)
- [Rutger's Crash Course](#)
- [Radiopaedia's Neuroimaging tool](#)
- [Neuro Schemas \(ddx\)](#)
- [Barrow's Neurology APP Bootcamp](#)

Be curious – and expect to learn way more than you anticipated!

Job Application Tips

Be honest about your interest and what support you expect

- Look for a job willing to train a new PA (or PA new to neurology)

Be clear on the role of PAs

- If they haven't worked with a PA before, what are the expectations/model

Find a mentor

- Can be a PA, MD, NP – ideally in your field but not necessarily

Consider your ideal transition to practice

- Fellowship? Transition to practice program?

Want to talk more about being a neurology PA?

Hamacher.allyson@mayo.edu

