



Update from NCCPA: Focus on PANRE Alternative

Alicia Quella, PhD, PA-C
Director of PA Relations

Presentation Outline

- Overview of PANRE-LA
(alternative to traditional PANRE)
- Certificates of Added
Qualifications (CAQ)
- NCCPA Resources





| Where it all began...

The process for designing an alternative to PANRE has ...

- been thoughtful and deliberate
- relied heavily on PA input
- included feedback from other stakeholders
- included environmental scanning for current/emerging trends
- included extensive qualitative and quantitative analysis of data gained through the Pilot administration

A paradigm shift



- Shift in assessment *of* learning to assessment *for* learning and that is both formative and summative
- Shift in thinking of recertification as a “point in time” assessment to determine if practitioners meet a standard to one that helps practitioners identify and close knowledge gaps so they can meet the standard
- Shift in the tone of the relationship between the certifying organization and certificants



Longitudinal Assessments

- Shorter assessments spread over a longer period of time
- Recurring process versus “one and done”
- Purpose is to help identify and close knowledge gaps
- Supported by research
- Not a new concept, but relatively new to the certification arena
- Adopted in some form by the 24 ABMS member boards; also under consideration by others such as the NBCRNA

Key Takeaways From the Pilot (based on 18,000+ PAs) That Helped Inform Models



1

Every subgroup demonstrated knowledge growth over time overall, PAs performed very well with the mean score being two full standard deviations above the passing score.

2

PAs valued the immediate feedback to know if they answered a question correctly and the critiques that provided explanations – especially on questions they missed.

3

PAs appreciated the flexibility and convenience of the at-home format.

4

Having the ability and time to use references make the exam feel more like “real life” and reduces the anxiety of the exam.

Comparison with the Pilot

Similarities to the Pilot

- Same number of items per quarter
- Same number of scored quarters (8)
- Items administered one-by-one on any device
- Can log in/log out at their convenience
- Ability to use references (but not people)
- Answer “survey” questions before you know if they answered the item correctly (questions will be tweaked)
- Immediate feedback on whether item was answered correctly, critiques provided
- Remediation items (targeted questions) after Q1

Comparison with the Pilot

Similarities to the Pilot

- Same number of items per quarter
- Same number of scored quarters (8)
- Items administered one-by-one on any device
- Can log in/log out at their convenience
- Ability to use references (but not people)
- Answer “survey” questions before you know if they answered the item correctly (questions will be tweaked)
- Immediate feedback on whether item was answered correctly, critiques provided
- Remediation items (targeted questions) after Q1

Differences from the Pilot

- Have up to 3 years to complete 8 quarters; flexibility to skip quarters
- Same time per item throughout (5 minutes)
- Ability to “save for later” a set number of questions
- Opportunity to improve score/increase learning to pass if you don’t skip too many quarters
- Approved for Category 1 Self-assessment CME credit by AAPA

Years
1-6

- Submit application for PANRE-LA
- No assessment activity, but must complete CME requirements (no changes)

Years
7-9

- 25 questions per quarter
- Remediation questions after Q1, if needed
- Score 8 of 12 quarters to determine pass/fail decision
- Potential early exit after 8 quarters based on performance and participation
- Continue to meet CME requirements

Year
10

- No assessment or 3 attempts to take PANRE, if needed
- Continue to meet CME requirements

PANRE-LA Overview

- Quarter 1 of the PANRE-LA was launched this January 2023 for the PAs due to recertify in 2024-2026.
- Next application cycle will open July 2023 for the PAs due to recertify in 2027.
- The traditional PANRE will still be available as a recertification option and it is the same cost.

Examples of the PANRE-LA Timeline

		Year to Start the Process													
Re-Certification Year		2023	2024	2025	2026	2027	2028	2029	2030	2031	2032	2033	2034	2035	2036
	2024	X	X	X*	PANRE*					X	X	X	PANRE		
	2025	X	X	X	PANRE*						X	X	X	PANRE	
	2026	X	X	X	PANRE							X	X	X	PANRE

*Requires an extension



Before We Leave PANRE

- Blueprint has been updated (January 2023)
- Assessment of **core** medical knowledge vs general medical knowledge
- Much more specificity provided about possible content on exam
- Many more details on NCCPA website at: <https://www.nccpa.net/wp-content/uploads/2022/04/2023-PANRE-PANRELA-By-Content.pdf>
- Practice PANRE questions: <https://www.nccpa.net/resources/sample-panre-questions/>
- PANRE-LA Tutorial: <https://www.nccpa.net/maintain-certification/#about-panre-la>

Content Blueprint

	Performance Expectation			
	History & Physical	Diagnosis	Intervention (Basic)	Intervention (Complex)
Cardiovascular System – 12%				
Abdominal aortic aneurysm	•	•	•	
Acute myocardial infarction: non-ST-segment elevation myocardial infarction (NSTEMI)	•	•	•	
Acute myocardial infarction: ST-segment elevation myocardial infarction (STEMI)	•	•	•	•
Acute myocarditis	•	•		
Acute pericarditis	•	•		
Angina pectoris (stable and unstable angina)	•	•	•	
Aortic dissection	•	•		
Arterial embolism/thrombosis	•	•	•	
Atrial fibrillation	•	•	•	

Presentation Outline

- Overview of PANRE-LA
(alternative to traditional PANRE)
- Certificates of Added
Qualifications (CAQ)
- NCCPA Resources



Key Principles Of The CAQ Program

- NCCPA (and many stakeholders) agree that the PA-C must maintain its position as the *primary credential for all PAs*.



Key Principles Of The CAQ Program

- NCCPA (and many stakeholders) agree that the **PA-C** must maintain its position as the **primary credential for all PAs**.
- NCCPA has remained committed to developing a **voluntary** specialty program.
 - A CAQ is not required to maintain NCCPA certification, and we require licensure as a condition of earning a CAQ so that it can not become a requirement for licensure



Key Principles Of The CAQ Program

- NCCPA (and many stakeholders) agree that the **PA-C** must maintain its position as the **primary credential for all PAs**.
- NCCPA has remained committed to developing a **voluntary** specialty program.
 - A CAQ is not required to maintain NCCPA certification, and we require licensure as a condition of earning a CAQ so that it can not become a requirement for licensure
- The program has been developed to be **as inclusive as possible**, recognizing the individual differences among and within specialties.



Which Specialties ?

- Cardiovascular & Thoracic Surgery
- Emergency Medicine
- Hospital Medicine
- Nephrology
- Orthopaedic Surgery
- Pediatrics
- Psychiatry

Coming soon:

- Dermatology
- Palliative Medicine and Hospice Care
- Obstetrics and Gynecology
- Occupational Medicine



CAQ Components

- Prerequisites
 - Unrestricted license from state(s) and/or unrestricted privileges to practice for a government agency
 - Current PA-C
- Specialty-related CME (not in addition to certification maintenance CME requirement)
- Experience
- Attestation re specific procedures and/or cases
- Specialty CAQ exam (resources available)



CAQ By the Numbers (2011 –2021)

Total = 2,400

- 1,142 in emergency medicine
- 615 in psychiatry
- 259 in orthopaedic surgery
- 200 in hospital medicine
- 79 in pediatrics
- 68 in CVT surgery
- 37 in nephrology



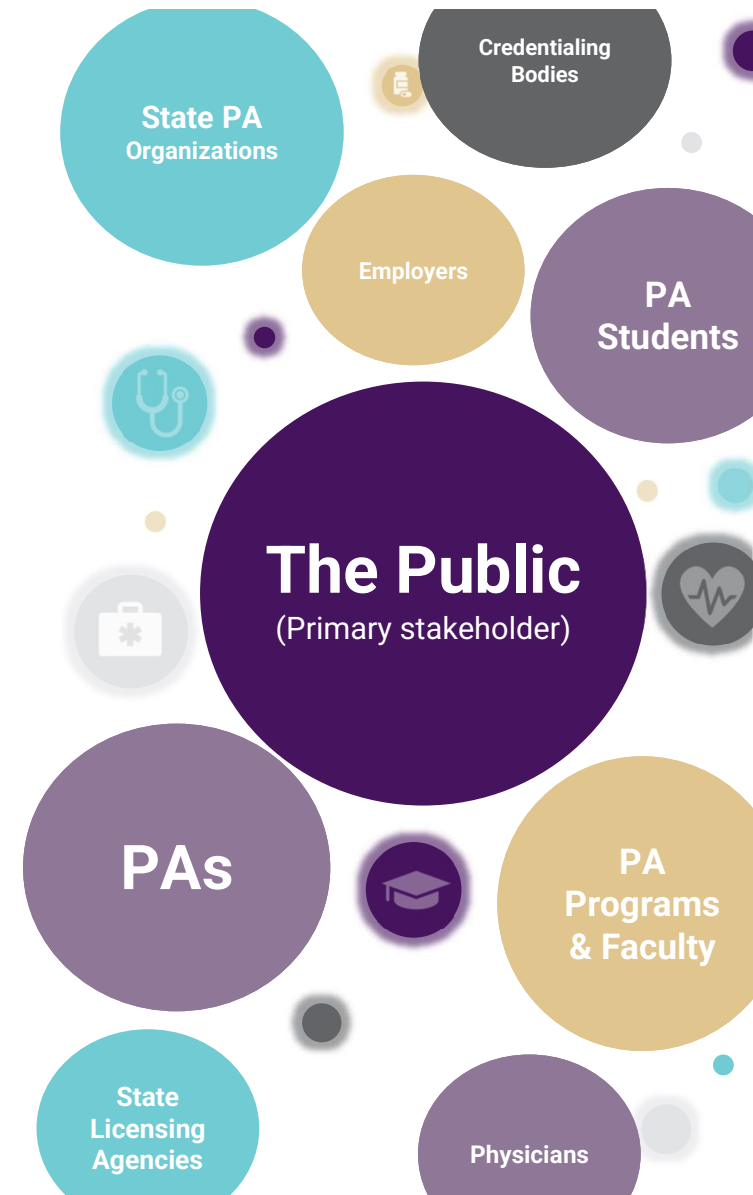
Presentation Outline

- Overview of PANRE-LA
(alternative to traditional PANRE)
- Certificates of Added
Qualifications (CAQ)
- **NCCPA Resources**



NCCPA Guiding Principles

- NCCPA is dedicated to serving the interest of the public
- We remain committed to the flexibility that PAs have to change specialties during their career and to work in multiple specialties

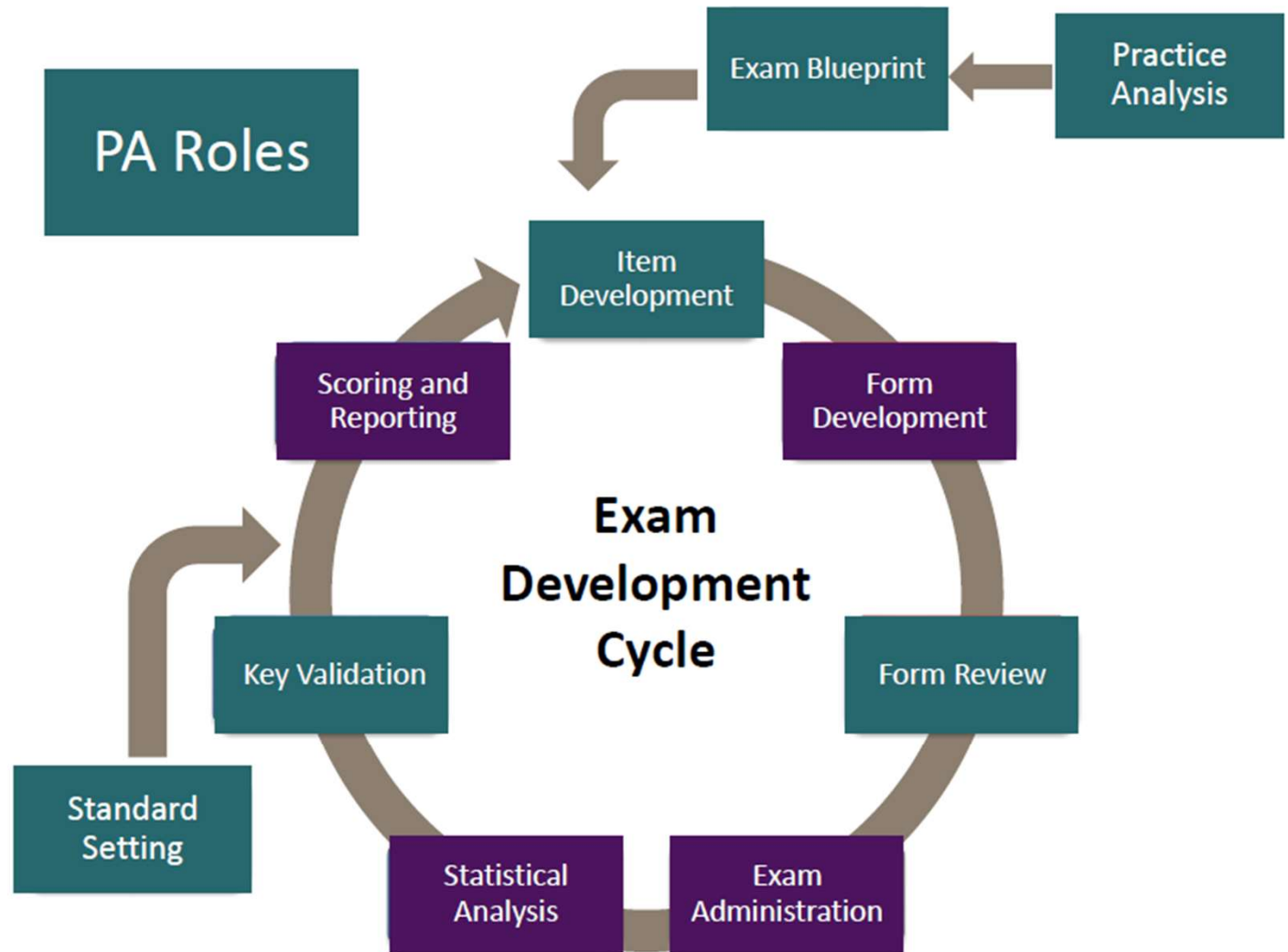




You Can't Spell NCCPA Without PA

- PAs are involved in many important aspects of the NCCPA
- Board of Directors (11 of 18 are PAs)
 - Apply for a PA Director at Large position soon- this elected position starts in January 2024
- Exam development and advisory activities
- PA Ambassador program to increase awareness

PA Involvement in Exam Development Process



Benefits to volunteering – volunteer@NCCPA.net



Expenses for travel/hotel accommodations covered

Experience that can be included on a CV, and enhanced personal and professional development



Volunteers play an important role – contributing to quality of the exams administered by NCCPA



Honoraria (\$\$\$) issued after attendance at each meeting

NCCPA Communications to PAs

- Monthly electronic newsletter
- All platforms of social media
- PA Insights with NCCPA podcasts
- Live and virtual presentations like this
- Newly redesigned and updated website



www.PAsDoThat.net

An Online Overview of the PA Profession

Certified PAs Do That!

Take the Quiz

Get to Know Certified PAs

Learn more about PAs and how they help to provide over 9.5 million patients like you with high-quality, accessible care each week.



WHAT IS A CERTIFIED PA?

Certified PAs Do That!

Take the Quiz

Did you know?

- Certified PAs**
diagnose, treat, and manage acute and chronic illnesses.
- Collaborate**
Certified PAs practice medicine collaboratively with physicians on health care teams.
- Military Roots**
The PA profession has military roots. The original three PAs who graduated from the first PA program were ex-Navy corpsmen.
- 2,000 Hours**
Certified PAs complete more than 2,000 hours of clinical rotations in PA school.



How do I know that I will receive high-quality care from a Certified PA?

Ongoing Certification Maintenance

Certified PAs are required to complete 100 hours of continuing medical education (CME) every two years.

Certified PAs participate in the **Physician Assistant National Recertifying Examination (PANRE)**, a periodic



Education

Certified PAs are educated at the master's degree level. Before entering PA school, PAs complete a bachelor's degree program, and most are required to have prior health care experience with hands-on patient care. PA programs are typically 27 months, and PA students must complete at least 2,000 hours structured clinical education before they graduate.

License to practice

In order to obtain their license to practice medicine, Certified PAs must graduate from an accredited PA program and pass the **Physician Assistant National Certifying Examination (PANCE)**. Once they have completed these requirements they can apply for a license with their state's medical board.

State licensure laws authorize PAs to practice medicine either pursuant to a supervision agreement with a physician or in collaboration with a physician.

Need More Time To Meet a Deadline or Other Requirement?

Requests for exceptions to policy (ETP) which are extensions of certification for additional time to earn/log CME and/or take and pass an exam due to (requires documentation):

- military obligation
- death in the family
- personal or family medical issues
- other significant and severe extenuating circumstances



- Search hundreds of jobs for Certified PAs
- Upload your résumé
- Set up alerts for new jobs

The screenshot displays a job search interface with a search bar at the top containing the text "JOB TITLE, SKILLS, KEYWORD, COMPANY" and a location field with a "FIND JOBS" button. Below the search bar, the results are titled "716 PHYSICIAN ASSISTANT JOBS | NATIONAL COMMISSION ON CERTIFICATION OF PHYSICIAN ASSISTANTS". A sorting menu shows "BEST MATCH" selected, with other options for "DATE", "JOB TITLE", and "EMPLOYER". On the left, a filter sidebar includes "UPDATE RESULTS" and categories for "Job Category" (Physician Assistant (716)), "Location", "Date Posted", and "Visa Waiver". The main results list includes:

- Physician Assistant** (Today): Nevada Orthopedic & Spine Center is celebrating twenty years of orthopedic excellence by providing quality comprehensive orthopedic care and setting the standard in Southern Nevada. [NEVADA ORTHOPEDIC & SPINE CENTER](#), Las Vegas, Nevada, Orthopaedic - PA.
- PA / Primary Care / Occupational Health** (Today): A Physician Assistant is needed for a full scope family practice opportunity in Salinas, CA. [Advanced Practice Solutions, LLC](#), Salinas, California, Occupational Medicine - PA.
- Physician Assistant - Internal Medicine** (Today): Ind.PA Spectrum Healthcare Resources has an opportunity for a civilian Physician Assistant-IM at Bremerton Naval Hospital in Bremerton, Washington. [Spectrum Healthcare Resources](#), Bremerton, Washington, Internal Medicine - PA.
- Physician Assistant - Family Medicine** (Today): Spectrum Primary Care has an opportunity for a civilian Family Medicine Physician Assistant at the Veteran's Affairs Outpatient Clinic (CBOC) in Alamogordo, New Mexico. [Spectrum Healthcare Resources](#), Alamogordo, New Mexico, Family Medicine - PA.
- Family Practice Physician Assistant** (Today):

Click "Career Center" Link at www.nccpa.net

PA-C Emeritus

A Recognition Program

Benefiting the PA Foundation's

*PA Student
Scholarship Fund*

PA-C Emeritus

- **Recognition for PAs retiring from clinical practice –**

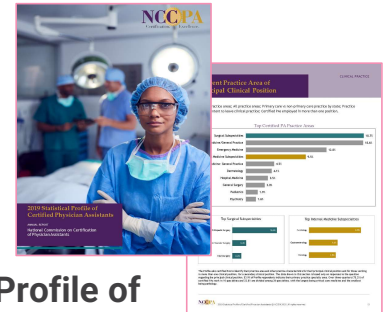
NOTE: The PA-C Emeritus designation is not the equivalent of PA-C certification. Those designated as PA-C Emeritus are not considered certified by NCCPA and may not hold themselves out as such.

- **Eligibility requirements:**

- Retired from clinical practice
- Unable to practice due to permanent disability
- Have been NCCPA-certified at least 20 cumulative years during the PA career
- No reportable actions in NCCPA disciplinary history

- **One-time \$50 application fee**

NCCPA Research



2021 Statistical Profile of Certified PAs

- Geographic Distribution
- Gender, Age, Race and Ethnicity
- Education (Highest Level Reached)
- Top PA Practice Areas (Principal Clinical Position)
- Practice Setting



2021 Statistical Report of Recently Certified PAs

- Assessment of Job Opportunities
- Plans to Seek Additional Education or Training
- Educational Debt
- Practice Environment and Work Life Balance
- Job Search

DEI Initiatives and Media/Public Relations

- Back 2 School Program – increasing awareness of PA profession in elementary, middle and high schools
- REPRESENT! Summit – hosted by NCCPA September 2022 at the National Center of Civil and Human Rights in Atlanta, GA.
- Annual PR campaign – Certified Partners
- PA Week outreach – billboards, etc.
- PA Student appreciation outreach and give-aways



Board Certification and Title Change Updates

- In May 2022, NCCPA's Board of Directors approved the use of the term *Board Certification* when referring to PANCE, PANRE, the PA-C credential, and NCCPA Certification where appropriate.
- This terminology more definitively represents and communicates the rigorous process PAs engage in to demonstrate medical knowledge, clinical skills and competencies, and the generalist credential earned by all NCCPA Certified PAs upon entry to the profession and maintained throughout their careers.
- Additionally, NCCPA has adopted policies that treat the titles "physician assistant," "physician associate," and "PA" as equivalent and synonymous and is updating its policies, published guidance, and publications to reflect that.

History of the PA Licensure Compact

The PA Compact is a joint initiative started in 2019 to improve licensure portability for PAs.

The initiative is made possible through the partnership with the following organizations:

- Federation of State Medical Boards (FSMB)
- American Academy of Physician Associates (AAPA)
- National Commission on Certification of Physician Assistants (NCCPA)

This project is supported by the Health Resources and Services Administration (HRSA) of the U.S. Department of Health and Human Services (HHS) as part of funding for grant #H1MRH24097. The contents are those of the author(s) and do not necessarily represent the official views of, nor an endorsement, by HRSA, HHS or the U.S. Government.

PA Licensure Compact Purpose

- Facilitates PA licensure portability
- Ensures PAs meet acceptable standards of practice
- Expands the availability of PA services
- **Supports military families**
- Promotes cooperation among PA member states in the areas of licensure and regulation
- Offers a high degree of patient protection across state lines

Individual Requirements to Obtain Compact Privileges

To obtain the compact privilege, a licensee must:

- Have graduated from an accredited PA program
- **Hold current NCCPA certification**
- Have no felony or misdemeanor convictions
- Have never had a controlled substance license or permit suspended or revoked
- Have a unique identifier as determined by the compact commission

Additional Resources



<https://www.pacompact.org/>

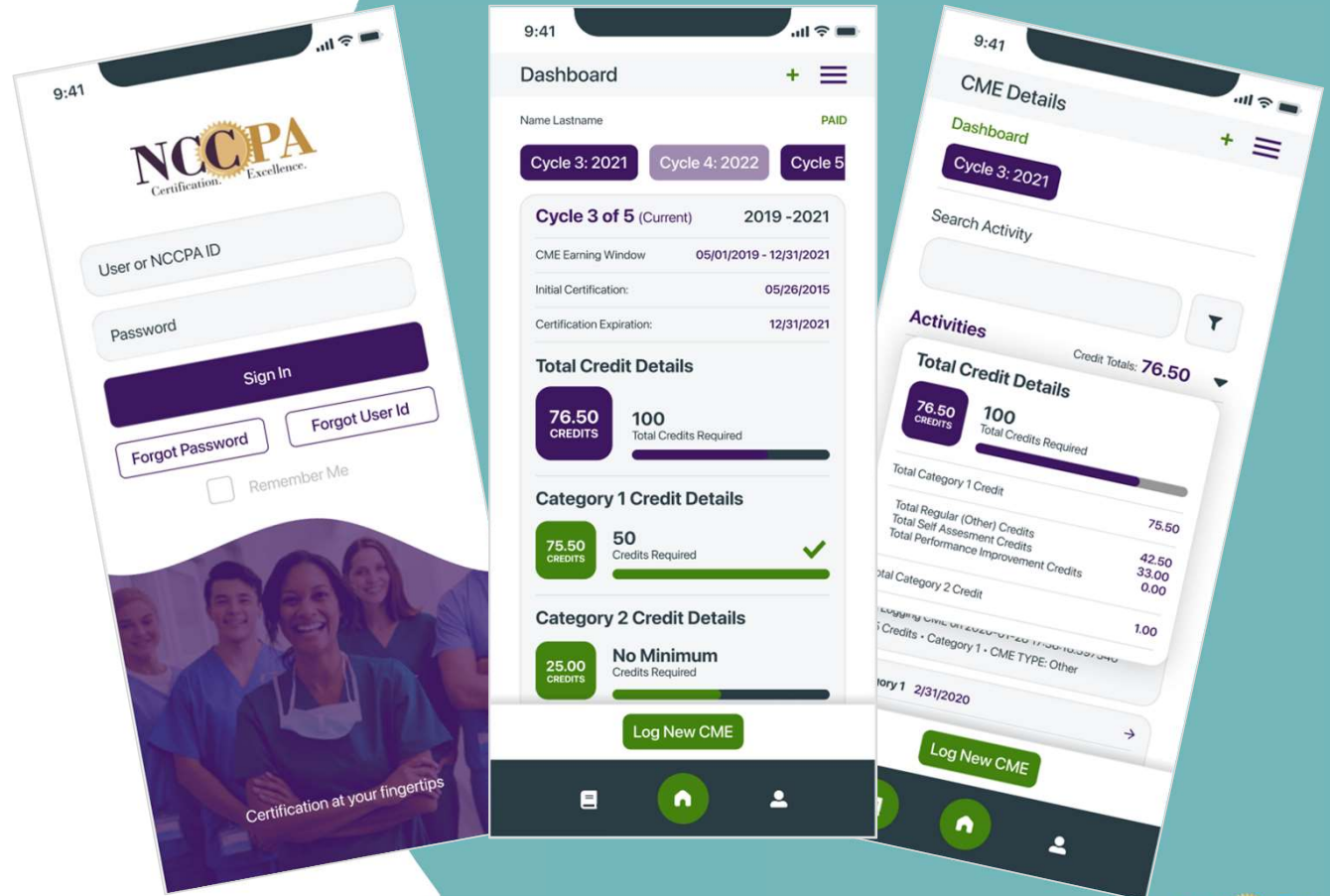
pacompact@csg.org

Compact Toolkit

- Model Legislation
- Section by Section Summary
- Reference Sheet for Legislative Testimony
- FAQ

There's an App For That!

- Keep track of your certification status
- Log CME as you earn it
- Update your professional profile



Alexa PA Skills



To Enable App:

- Say “Alexa, enable physician assistant facts”
- Type a search in the Alexa store for “Physician Assistant (PA) Facts”

To Play Facts once enabled:

- Say “Alexa, open PA facts”

More About NCCPA

2 Supporting Organizations:

- PA History Society



- nccPA Health Foundation



Thank you!!

Any questions:

- Phone at **678-417-8100**
- Text at **678-417-8101**
- E-mail at **nccpa@nccpa.net**

Email direct: **aliciaq@nccpa.net**

