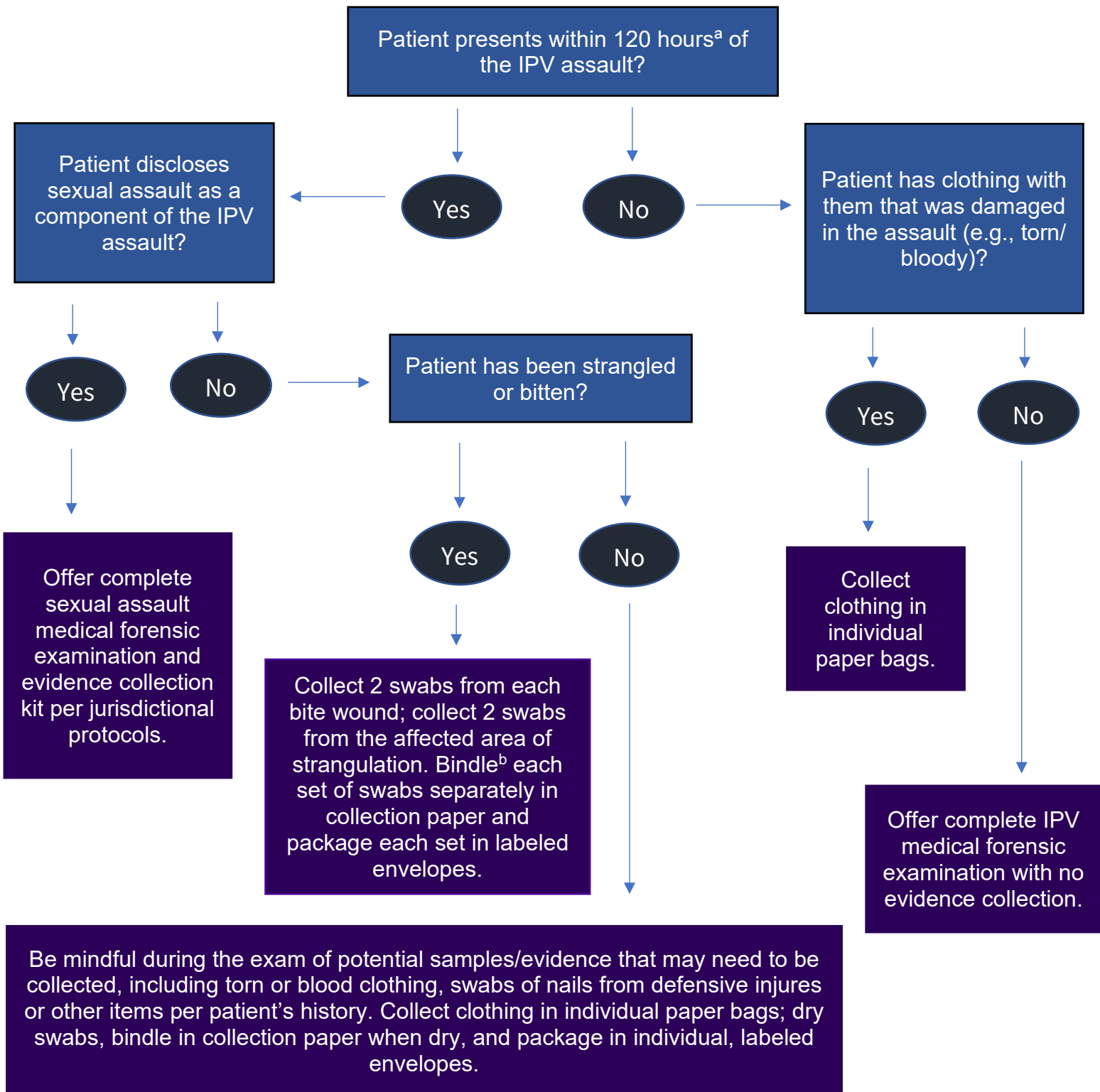


## Appendix G - Flowchart for Sample/Evidence Collection



a. The *National Best Practice for Sexual Assault Kits: A Multidisciplinary Approach* informs that samples/evidence should be collected up to 120 hours or longer after the assault and is considered best practices recommendations. Where jurisdictional protocols differ, please adhere to jurisdictional protocols ([National Institute of Justice, 2017](#)).

b. **Bindle:** (also referred to as *bindle paper*) Clean paper folded to use to contain trace evidence ([National Institute of Justice, 2009](#)).