
Urine for a Treat: Become a Piss Prophet in One Easy Lesson on Urinalysis



Harvey Feldman, MD, FACP, FASN
Professor, Physician Assistant Program
Nova Southeastern University
Ft. Lauderdale, FL



MAIN LEARNING OBJECTIVE

- Recognize the importance of urinalysis in the evaluation and management of acute and chronic kidney diseases.



URINALYSIS
is awesome!

OUTLINE

- Brief historical perspective on urinalysis
- Discuss collection, preparation, and performance of the procedure
- Gross inspection and chemstrip (dipstick) interpretation
- Case-based examples of diagnostic usefulness of microscopic examination of urine

Why Do a Urinalysis?

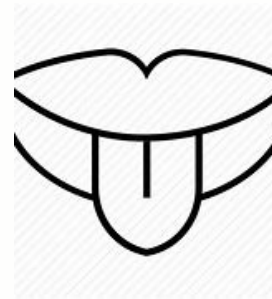
“When the patient dies the kidneys may go to the pathologist, but while he lives the urine is ours. It can provide us day by day, month by month, and year by year with a serial story of the major events within the kidney.”

Dr. Thomas Addis
(1881-1949)

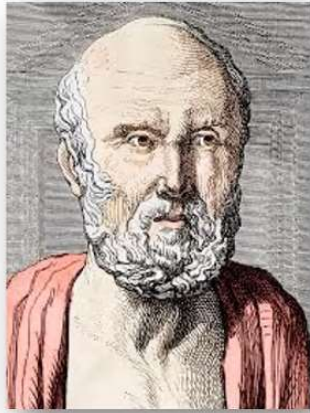
- “Fluid Biopsy” of the Kidney
“Biomarker” of kidney disease
- Economical and Quick
- Diagnose and Monitor Kidney and Urinary Tract Diseases
- Detect Systemic Disease

HISTORICAL PERSPECTIVE

In ancient times, a large part of medical practice began with an examination of the urine:



HISTORICAL PERSPECTIVE



Hippocrates
(460-375 BCE)

“...when bubbles settle on the surface of the urine, they indicate disease of the kidneys...”



Galen
(129-216)

“...kidneys play a role in the balance of body humors...”



Theophilus Protospatharius
(610-641)

Wrote *De Urinis* about macroscopic urine exam:
“...urine is a filtrate of the blood...”

HISTORICAL PERSPECTIVE

Jerusalem Code 1090:

“...Failure to examine the urine would expose the physician to public beatings...”

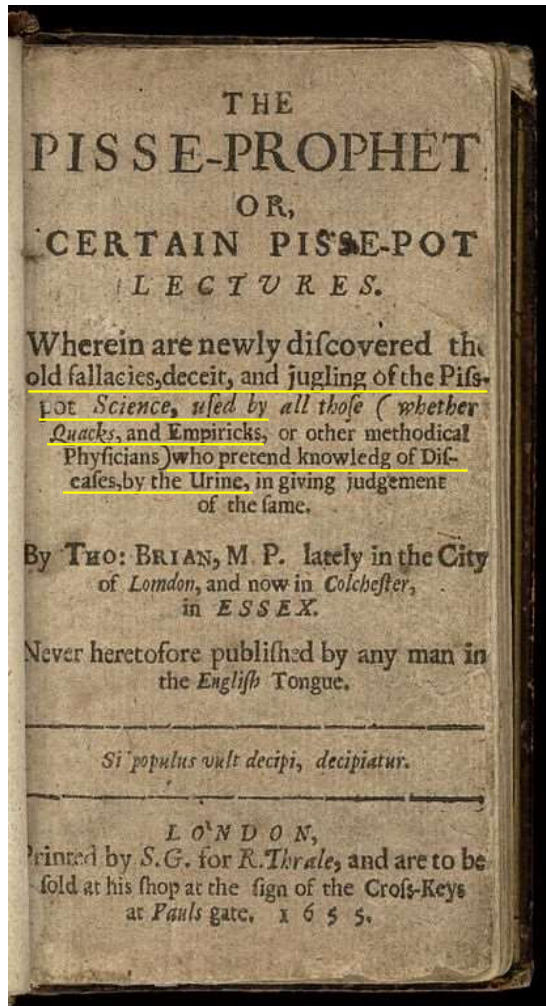


Pisse Prophets



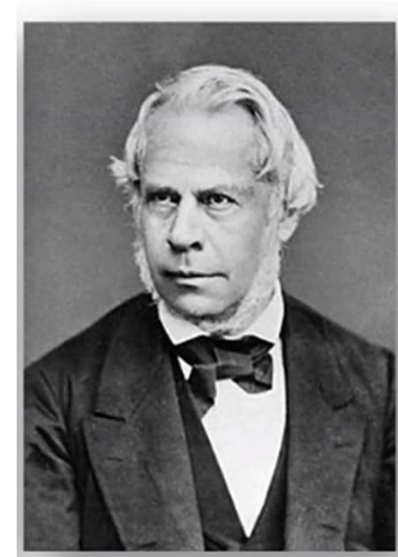
Matula

HISTORICAL PERSPECTIVE



Pierre Rayer
(1793-1867)

Established urine
microscopy



Jakob Henle
(1809-1885)

Made connection
between histology and
urine tubular casts

PREPARATION, COLLECTION, AND PERFORMANCE OF A URINALYSIS

PREPARATION AND COLLECTION OF THE SPECIMEN

- First-voided morning specimen is best
 - Random specimens may be too dilute, yielding false negative results
- Midstream sample after cleansing the urethral meatus minimizes contaminating elements
- If specimen is kept at room temperature: examine within 2h; otherwise refrigerate specimen up to max. of 4 hours
 - Prolonged delay, esp. with alkaline pH or low osmolality, causes cell lysis and cast dissolution

PERFORMANCE OF A URINALYSIS

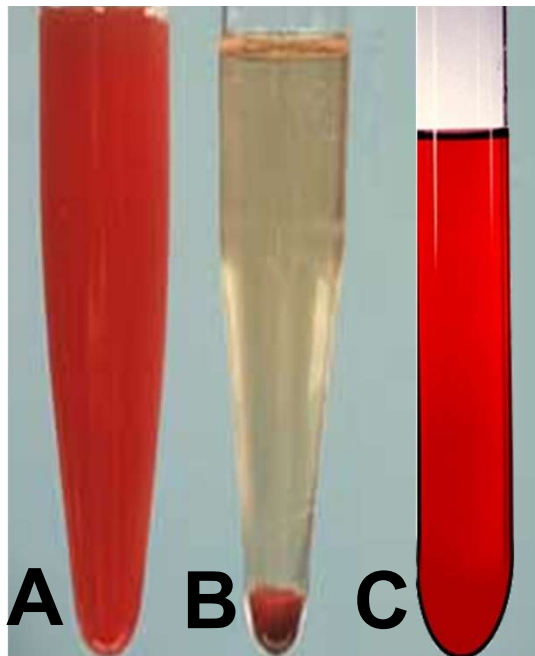
- Visual inspection
 - Color
 - Transparency
- Chemstrip (dipstick) evaluation
- Microscopic examination of urine sediment

VISUAL INSPECTION

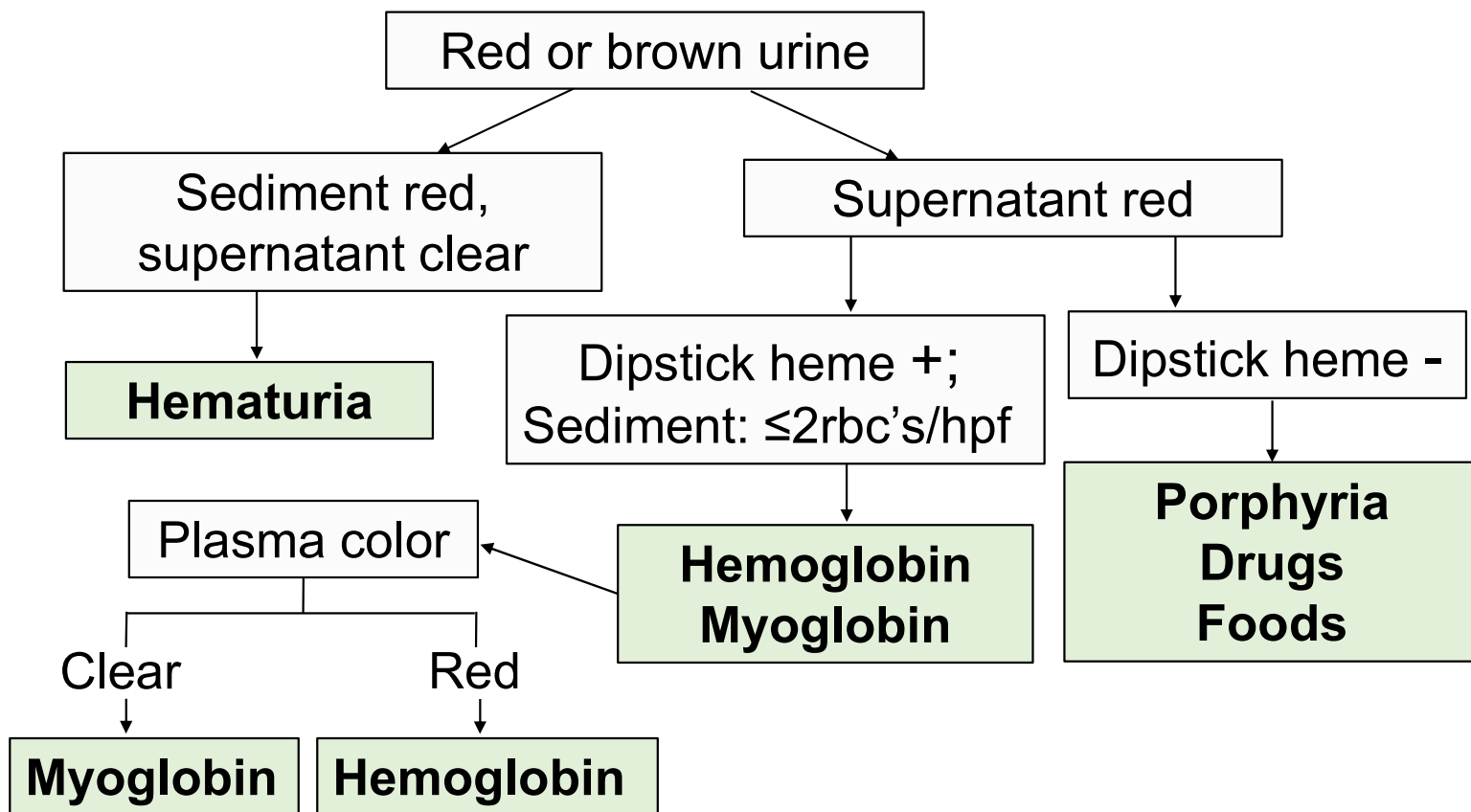
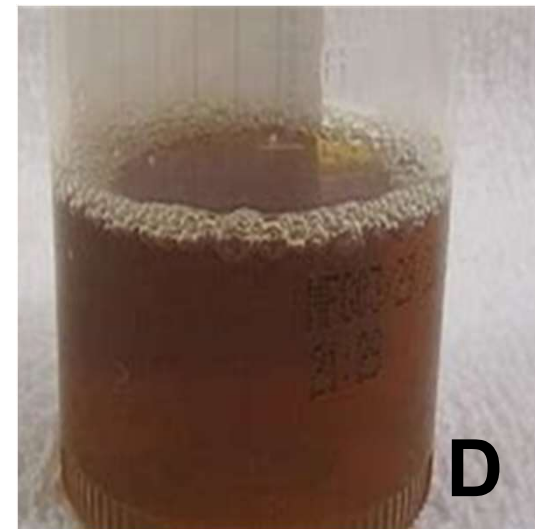
- Color
 - Normal: Yellow (pale straw to deep amber; reflects state of hydration)
 - Abnormal: Red, orange, brown-black, white, green, blue, purple
 - In 1487, Bartolomeo Montagnana (1380–1460) a professor at the University of Padua, published a treatise and a chart showing **21 shades of urine!**
- Transparency
 - Normal: Transparent (can read print through urine in a clear glass container)
 - Turbid or cloudy: RBCs, WBCs, squamous epithelial cells, bacteria, yeast, crystals, sperm, mucus
- Frothy: Proteinuria

ABNORMAL COLOR

COLOR	CAUSES
Red (pink to reddish brown or cola-color)	Hematuria, hemoglobinuria, myoglobinuria, acute intermittent porphyria, rifampin, phenytoin, senna, beets, blackberries, rhubarb
Orange	Phenazopyridine (Pyridium™), rifampin
Yellow-brown, brown, brown-black	Vitamin B complex, bilirubin, sulfasalazine (Azulfidine™), metronidazole, nitrofurantoin, chloroquine
Green to bluish-green	Phenols - propofol, promethazine (Phenergan™); indomethacin, methylene blue, amitriptyline, cimetidine, pseudomonas UTI
Purple	Bacteriuria in longstanding catheterized patients with alkaline urine: indoxyl → indigo (blue) + indirubin (red) → purple color
White (milky)	Pyuria, phosphate crystals, chyluria, propofol (milky pink due to uric acid crystals)



- A. Uncentrifuged: } Lower tract hematuria
- B. Centrifuged: } Lower tract hematuria
- C. Hemoglobinuria, myoglobinuria, acute intermittent porphyria
- D. Renal hematuria, hemoglobinuria or myoglobinuria



TECHNICOLOR URINE



Propofol



Pyridium™



Pyuria

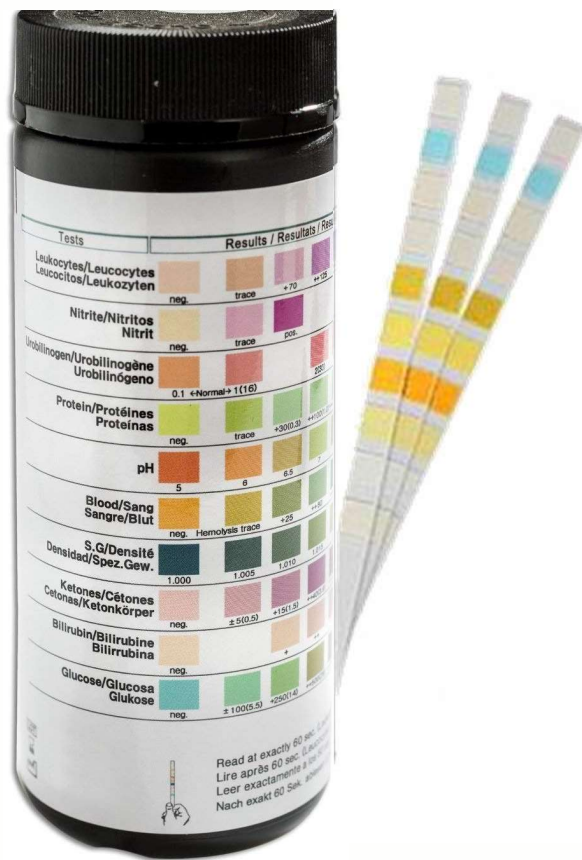


Bilirubin



Bacteriuria
+ alkaline pH

CHEMSTRIP (DIPSTICK)



Specific Gravity

pH

Protein

Glucose

Ketones

Blood

Leukocyte Esterase

Nitrates

Bilirubin

SPECIFIC GRAVITY

Normal: 1.002-1.035: Reflects state of hydration

Impaired concentration

- Diabetes insipidus
 - Central or nephrogenic
- Chronic kidney disease
- Diuretics

Impaired dilution

- Dehydration
- Inappropriate ADH secretion (SIADH)

SPECIFIC GRAVITY – PITFALLS OF DIPSTICKS

- Insensitive to nonionic solutes
 - Underestimates high s.g. due to glycosuria and nonionic contrast agents
- Underestimates s.g. with urine pH >6.5
- Overestimates s.g. with protein concentration >7 g/L
- ∴ Use **refractometer or osmometer** for accuracy
 - These measure **nonionic and ionic** molecules

URINE pH

Normal: 4.5-8.0; usually 5-6.5

Persistently Low pH

- Metabolic acidosis
- Chronic ascorbic acid ingestion (vitamin C)
- Starvation or ketogenic diet
- Uric acid nephrolithiasis (low pH favors precipitation)

Persistently High pH

- Metabolic alkalosis
- Urea-splitting bacteria
 - True infection
 - Bacterial overgrowth in vitro due to delay in analysis
- Distal renal tubular acidosis (pH persistently >5.5)

GLUCOSE

- Normally absent
 - Renal threshold for glycosuria is blood glucose >180 mg/dL
- Present in:
 - Diabetes mellitus, uncontrolled
 - Renal glycosuria – blood glucose is normal
 - Genetic proximal tubular defect
 - Sodium-glucose cotransporter 2 inhibitors (SGLT2 inhibitors)
- False negative dipstick reaction
 - Ascorbic acid in urine

LEUKOCYTE ESTERASE and NITRITE

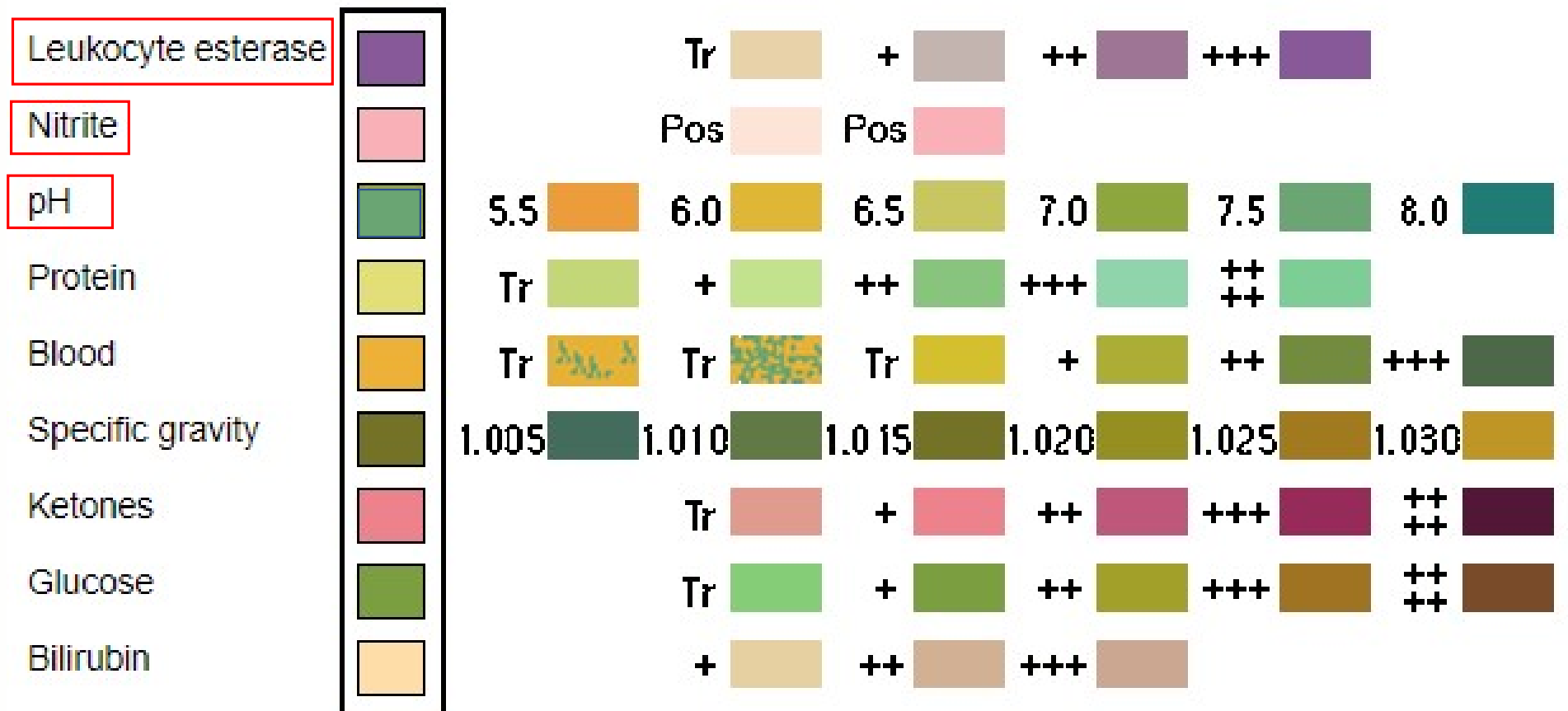
Leukocyte esterase (LE)

- Detects neutrophils in urine
- Sensitivity 80-90% in diagnosis of UTI compared to urine culture
- Positive with sterile pyuria
 - Chlamydia urethritis
 - Nephrolithiasis
 - Glomerular and interstitial nephritis
- False positive: vaginal contamination

Nitrite

- Detects gram negative bacilli
- Sensitivity 50% for UTI compared to urine culture; increases with positive LE

CHEMSTRIP (DIPSTICK)



PROTEINURIA - DEFINITIONS

- Normal total protein excretion ≤ 150 mg/day (av. 40-80 mg/day)
- Normal albumin excretion < 30 mg/day (av. ≤ 10 -15 mg/day)
- Moderately increased albuminuria (formerly microalbuminuria)
 - 30 to 300 mg/day (30-300 mg/g creatinine on spot urine)
- Severely increased albuminuria (aka overt proteinuria and formerly macroalbuminuria)
 - > 300 mg/day (> 300 mg/g creatinine on spot urine)

PROTEINURIA

Normal constituents	Excretion rate mg/day	% of total
Filtered Plasma Proteins		
Albumin	12	15
IgG, IgA, IgM, light chains	8	10
Other plasma proteins	20	25
<i>Subtotal of plasma proteins</i>	40	50
Non-Plasma Proteins		
Tamm-Horsfall protein (uromodulin)	40	50
Total protein (nl. ≤ 150 mg/day)	80 \pm 24 (1 SD)	100

PROTEINURIA - LIMITATIONS of DIPSTICKS

- Measures total protein concentration
- Very influenced by state of hydration
 - False underestimation with very dilute urine
 - False overestimation with concentrated urine
- Semiquantitative (trace to 4+)
- Insensitive – **misses** pathologic moderately increased proteinuria (microalbuminuria): **under ~300 mg/day**
- **Mainly detects albumin**: Misses light chains (multiple myeloma) and other low molecular weight proteins
- False positive: iodinated contrast, blood, urine pH >7.0

STANDARD DIPSTICK for PROTEIN

Dipstick reading	Approximate daily protein excretion
Negative	0
Trace	150 mg/day (ULN)
1+	200 to 500 mg/day
2+	500 to 1500 mg/day
3+	2000 to 5000 mg/day
4+	≥7000 mg/day

PROTEINURIA – BEYOND THE DIPSTICK

KDIGO Guidelines:

Positive dipstick $\geq 1+$: Confirm with quantitative test in ≤ 3 months

Persistent proteinuria ≥ 3 months = chronic kidney disease

Quantitative tests for proteinuria

- 24-hour urine collection
 - Cumbersome, often not collected properly
- Spot urine for **albumin:creatinine ratio** (nl. <30 mg/g)
 - Accurate estimate of 24-hour urine albumin excretion
- Spot urine for **protein:creatinine ratio** (nl. <0.2 g/g)
 - Consider using it when albumin:creatinine ratio is high (>300 mg/g)



MICROSCOPIC EXAMINATION



Time-honored way
Manual inspection



Current way
Automated analysis



COMPARISONS OF AUTOMATED vs. MANUAL EXAMINATION of URINE

- References: Lab Med 2016;47(92):124-133; Biochem Med 2016;26(3):365-375
 - Am J Kidney Dis 2016;67(6):954-964; Lab Med 2014;45(4):e152-e155; Am J Kidney Dis 2005;46(5):820-829
- **Bottom line on automated exams:**
 - Good for identifying RBCs, WBCs, squamous epithelial cells, bacteria, hyaline casts, common crystals
 - **Less reliable for identifying renal tubular cells, transitional cells, pathologic casts, less common crystals, lipids**
 - **∴ Don't rely on lab reports for decision making in patients with or suspected of having acute or chronic kidney disease.**

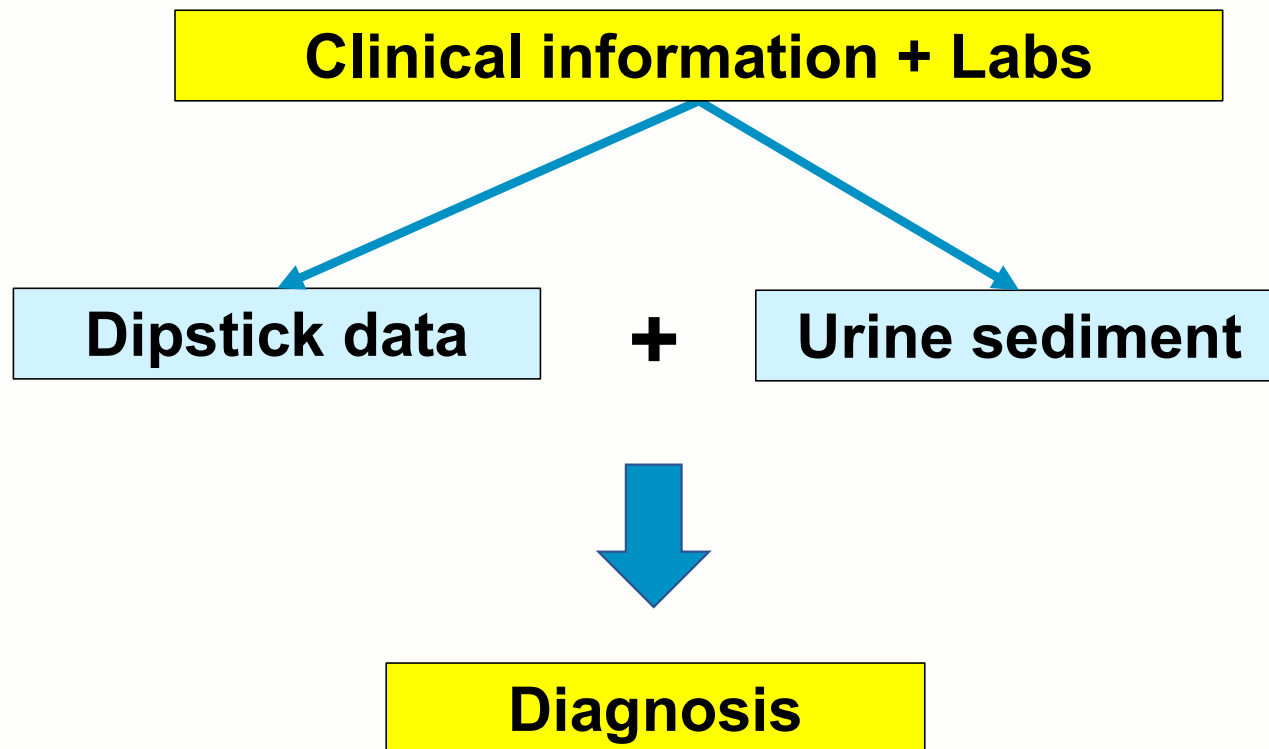
NORMAL URINE CONSTITUENTS

- Red cells---normal 0-2 or 3/hpf
- White cells---normal 0-4/hpf
- Renal tubular and/or bladder epithelial cells (if few; 0-3/hpf)
- Hyaline casts (if few; 0-2/lpf)
- Granular casts (if few; 0-2/lpf)
- Squamous epithelial cells (from vagina, vulva, urethra)
- Crystals in small numbers (e.g., CaOx, uric acid)

ABNORMAL URINE CONSTITUENTS

- Red cell casts
- White cell casts
- Oval fat bodies
- Renal tubular and/or bladder epithelial cells
(if in large numbers; $>3/\text{hpf}$)
- Hyaline and/or granular casts (if in large numbers; $>3/\text{lpf}$)
- Crystals – +/- depending on clinical context

APPLYING URINALYSIS TO DIAGNOSIS OF KIDNEY DISEASE



ACUTE KIDNEY INJURY

Prerenal
Glomerular
Tubular
Interstitial



Case 1

- **HPI:** A 70-year-old woman presents to the ED with intermittent **vomiting**, persistent **diarrhea**, fever, and abdominal pain that started 36 hours ago shortly after eating in a newly-opened neighborhood restaurant.
- **PMH:** Type 2 diabetes **SH:** noncontributory
- **Meds:** Glyburide, acetaminophen prn arthralgias, vitamin D/calcium
- **Exam:** BP 100/60; P 104, T 100.5
 - **Dry mucus membranes**; skin warm and dry, no rashes
 - **Neck veins flat**
 - Lungs clear; cardiac exam normal except for tachycardia
 - Abdomen flat, **hyperactive bowel sounds**, **mild diffuse tenderness**, no rebound
 - Extremities – no edema, pulses 1+

- **Laboratory Findings:**

- **Electrolytes:** Na⁺ 134, K⁺ 3.4, Cl 95, CO₂ 30

- Glucose 100 mg/dL

- **BUN 40 mg/dL** **Creat 2.0 mg/dL**

- **CBC:** Hb 13.5, **WBC 11,500** with 80% neutrophils, 16% lymphs, 2% eos

- **Urine Dipstick:** **SG 1.025**, pH 7.0, **Protein trace**, Blood neg., LE trace

Based on the clinical scenario and lab findings, what is the most likely diagnosis?

- A. Acute tubular necrosis (ATN)
 - B. Acute interstitial nephritis
 - C. Acute membranoproliferative glomerulonephritis
 - D. Prerenal azotemia
 - E. Exacerbation of progressive chronic kidney disease
-

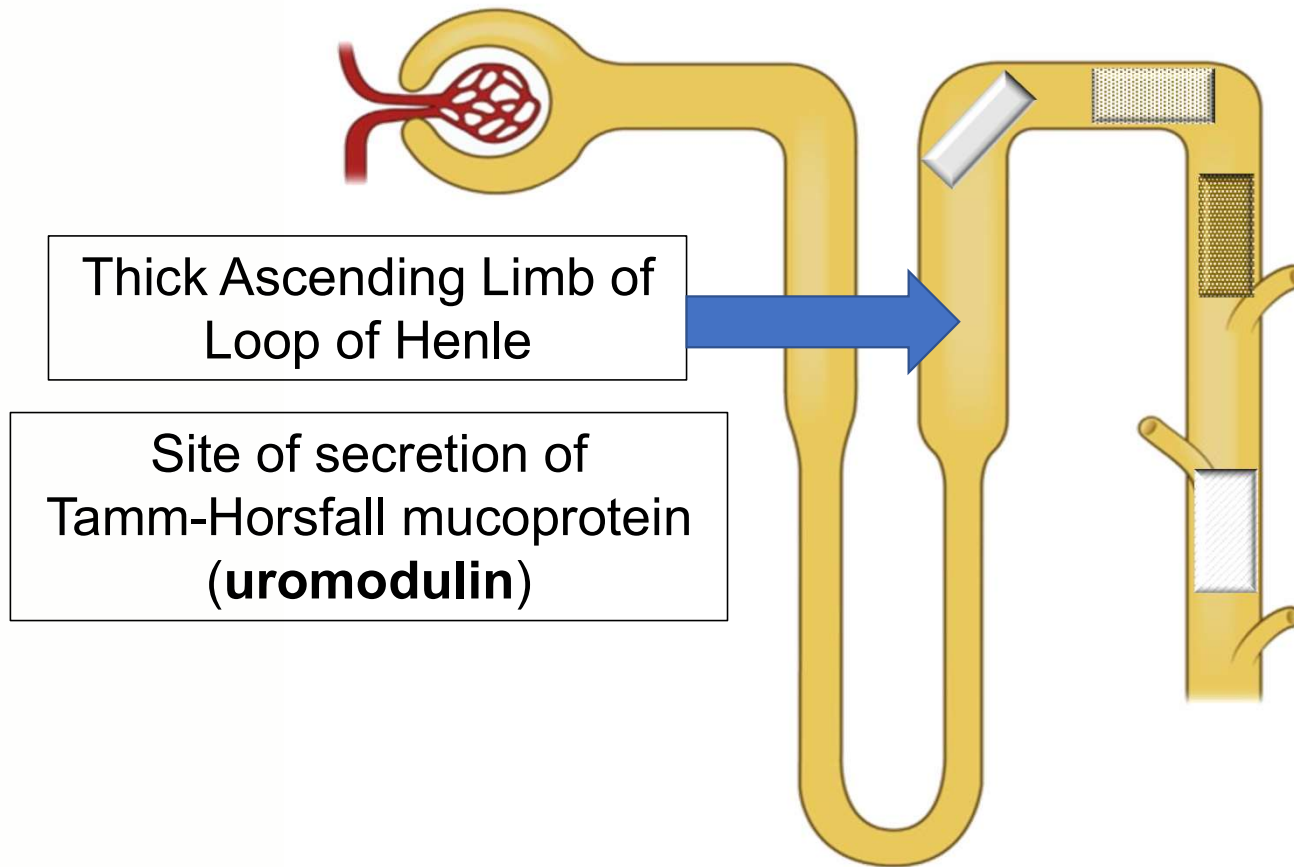
What would you expect to see in the urine sediment?

- A. Renal tubular epithelial cells
 - B. Waxy casts
 - C. Fatty casts
 - D. Hyaline casts
 - E. White blood cells
-

Urine Sediment



What is the composition of hyaline casts and where are they formed?



When can we see hyaline casts?

- Healthy people (in small numbers)
 - After strenuous exercise
 - In concentrated urine
- Diuretic therapy
- Many varieties of acute and chronic kidney disease (in larger numbers, in company of other abnormalities)
- Prerenal azotemia

Case 1

Clinical information/labs

- Vomiting and diarrhea x 3 days
- Abdominal pain, low grade fever
- ↑ BUN >> ↑ creatinine; leukocytosis
- Low BP, increased pulse rate

Dipstick data

- SG 1.020
- Trace protein

+

Urine sediment

- Hyaline casts



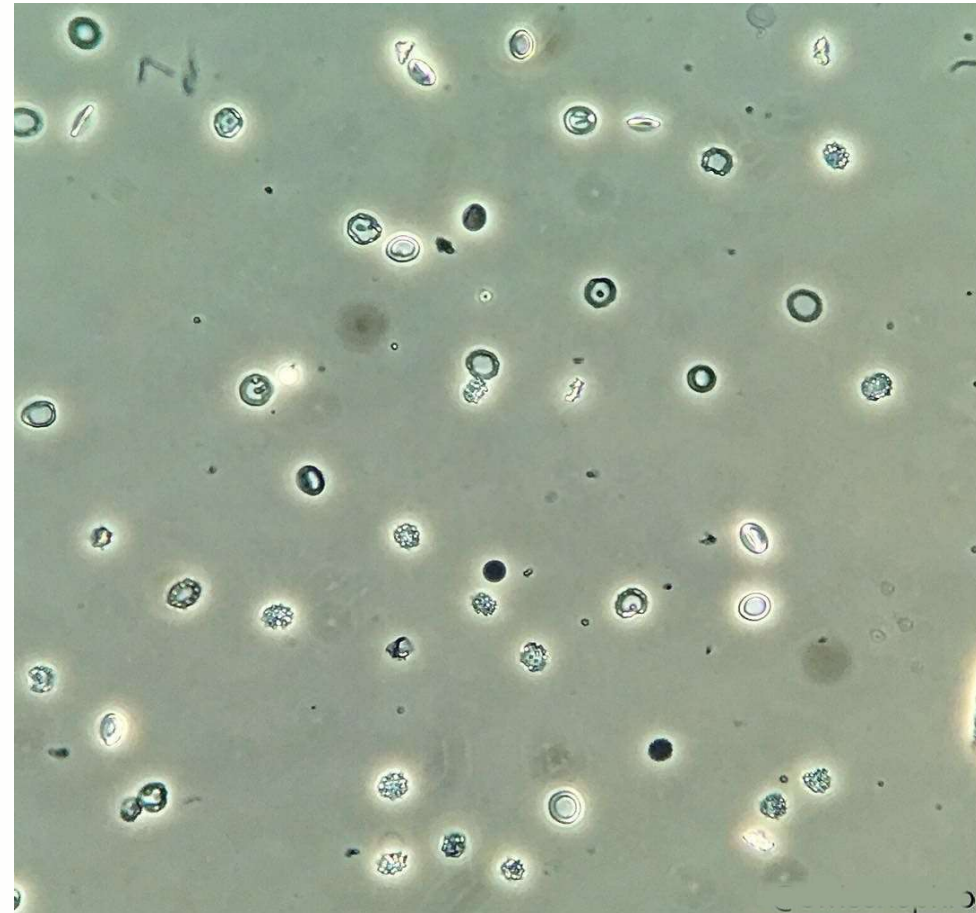
Diagnosis
Prerenal azotemia

Case 2

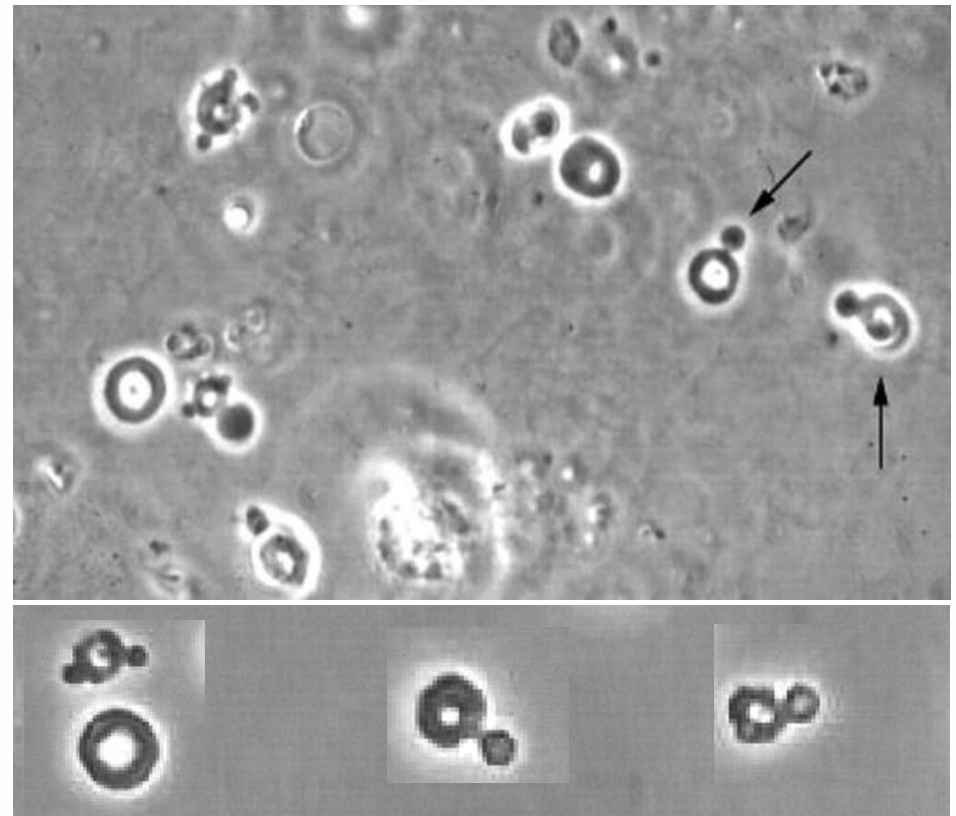
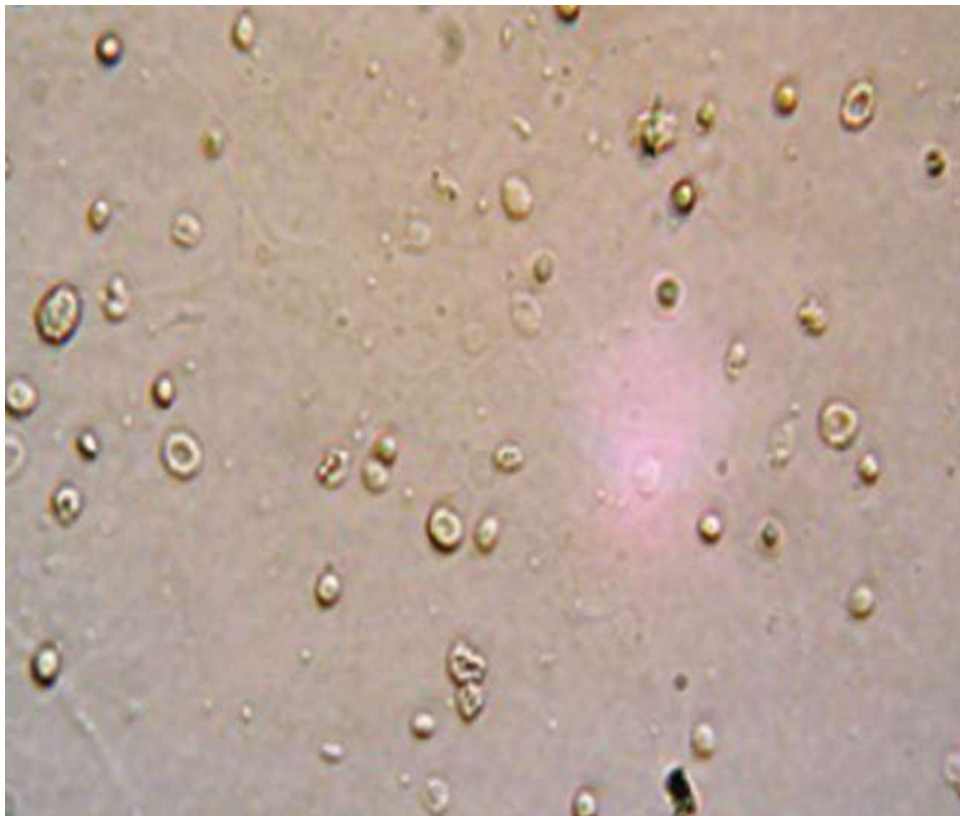
- **HPI:** 30-year-old woman presents with **pain in her knees and hands**, fatigue, mild **intermittent febrile episodes**, anorexia and weight loss over the past month. No prior h/o hypertension or kidney disease.
- **PMH:** **Three miscarriages, DVT in left leg** SH: Noncontributory
- **Exam:** **BP 150/100. Malar rash, tender fusiform swelling of finger joints, tender knees with mild effusion**, and 1+ pedal edema.
- **Laboratory findings:**
 - CBC: Hb 10.0, WBC 11,000
 - **BUN 35 mg/dL, creatinine 2.4 mg/dL**
 - **Anti-dsDNA +++**
 - **Anti-phospholipid Abs +++**
- **Urine dipstick:**
 - SG 1.010
 - **protein 2+**
 - **blood 3+**
 - **LE 2+**

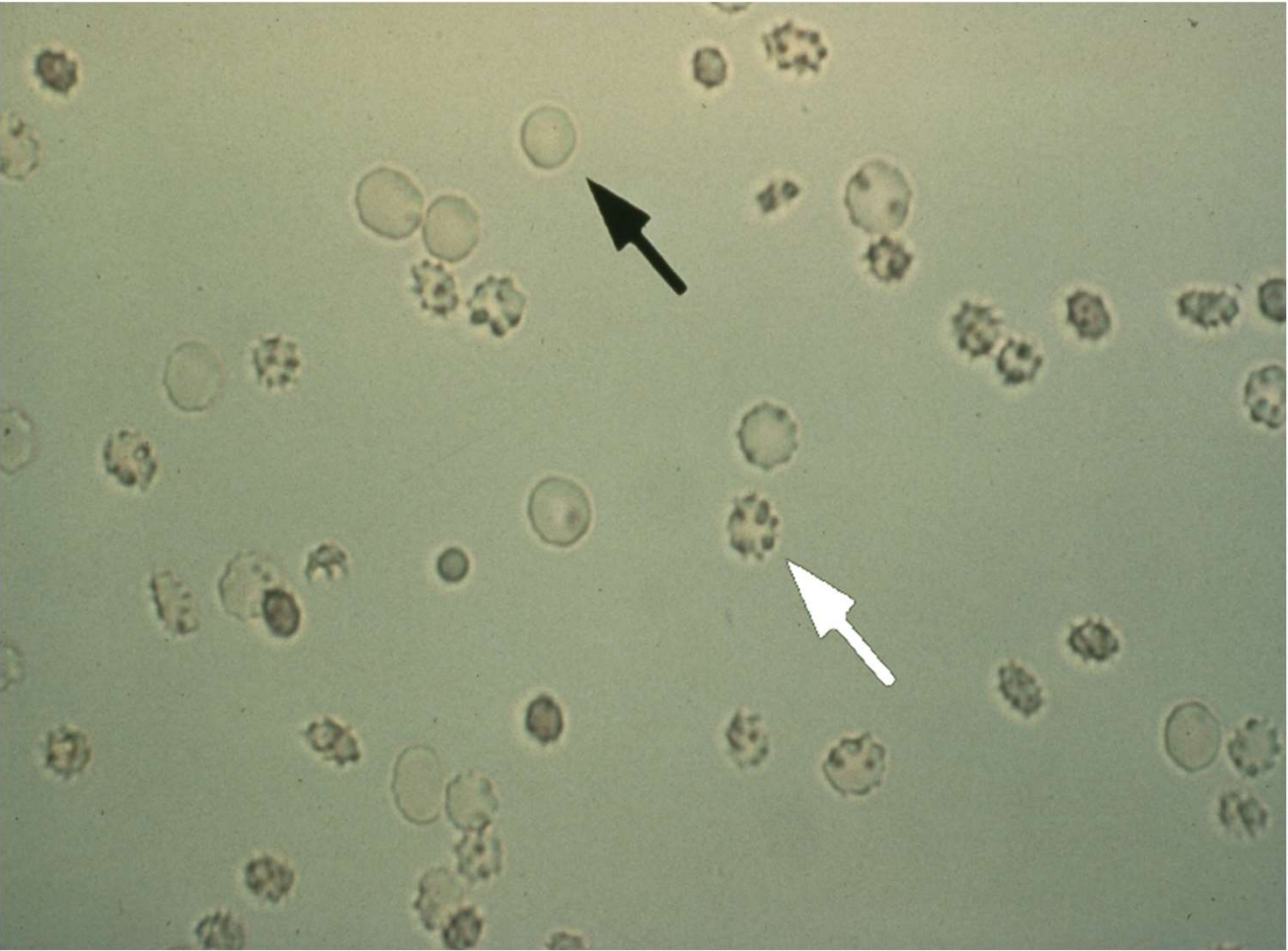
What do you see in this patient's urine sediment?

- A. Budding yeast cells
- B. Renal tubular epithelial cells
- C. White blood cells
- D. Dysmorphic red blood cells
- E. Isomorphic red blood cells



Dysmorphic RBCs and Acanthocytes





Isomorphic (normal) RBCs
(black arrow)

Crenated RBCs
(white arrow)
Seen in hypertonic urine

What additional finding are you likely to see in the urine sediment that will localize the renal lesion present in this patient?

- A. White cell casts
 - B. Red cell casts
 - C. Renal tubular epithelial cells
 - D. Granular casts
 - E. Transitional epithelial cells
-

RED BLOOD CELL CASTS

Intact RBC cast



Intact RBC cast)



Degenerated RBC cast (heme pigment cast)



- RBC casts are almost pathognomonic for glomerulonephritis or small vessel vasculitis. They are rarely seen in acute interstitial nephritis.
- RBC casts appear in a background of hematuria with dysmorphic RBCs, WBCs, granular casts, and proteinuria (i.e., a nephritic sediment)

Based on the clinical scenario, lab findings, and urinalysis, what is the most likely diagnosis?

- A. Microscopic polyarteritis
- B. Post-infectious glomerulonephritis
- C. Henoch-Schonlein glomerulonephritis
- D. Thrombotic microangiopathy
- E. Proliferative lupus glomerulonephritis

Case 2

Clinical information/labs

- Arthralgias, malar rash, fevers, ↑BP
- Joint swelling with effusion, pedal edema
- Hypercoagulable state, miscarriages + DVT
- Anemia, ↑ BUN and creatinine, anti-dsDNA
- Antiphospholipid antibodies

Dipstick data

- SG 1.010
- Protein 2+
- Blood 3+
- LE 2+

+

Urine sediment

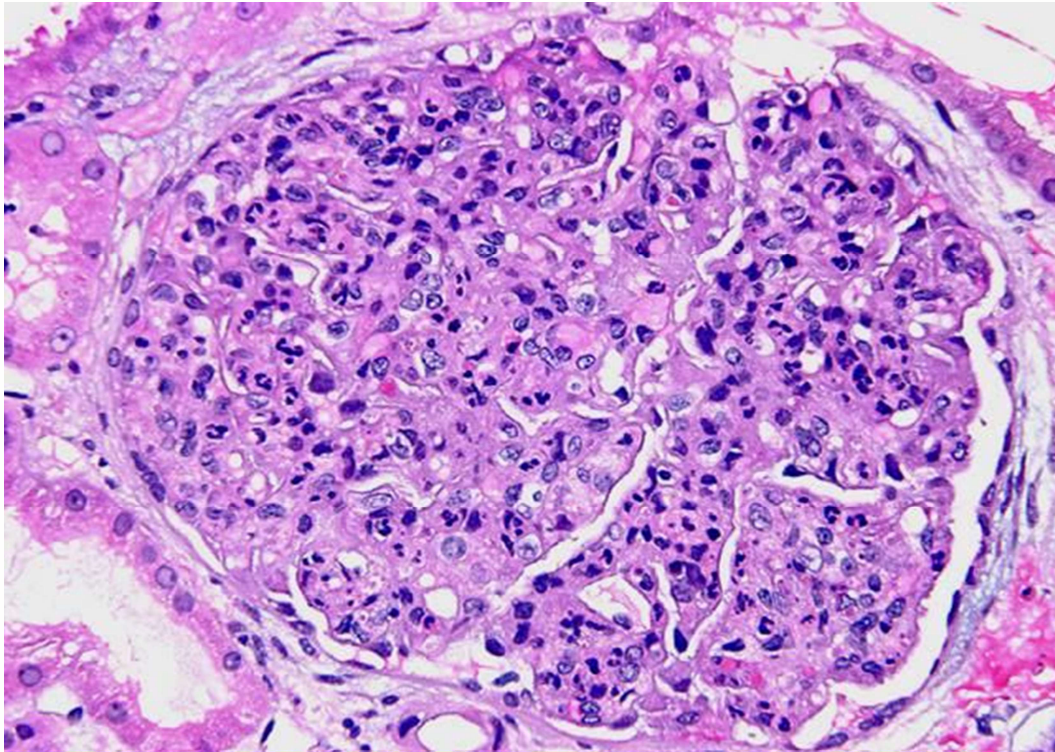
- Dysmorphic RBCs
- RBC casts
- WBCs



Diagnosis

Proliferative glomerulonephritis due to SLE

Nephritic syndrome



Proliferative Glomerulonephritis

Clinical features

- Hypertension
- Hematuria
- Edema
- Renal failure
acute or subacute
(days to a few months)
- Oliguria (<400 ml/day)

Pathologies*

- Proliferative GN
 - Crescentic GN (RPGN)
 - Membranoproliferative GN
- *Usually immunologically mediated
- *May be primary or due to a secondary disease

Case 3

- **HPI:** A 60-year-old man with **chronic kidney disease** (serum creatinine 1.9 mg/dL) is hospitalized with **lobar pneumonia due to MRSA** and has been **treated with vancomycin** for 10 days. His **creatinine is now 3.8 mg/dL** and he is **oliguric** despite receiving IV fluids at 100 cc/hr.

- **PMH:** HTN, T2DM, hyperlipidemia

Meds: lisinopril, linagliptin, atorvastatin

- **PE:** BP 150/80, P 85, R 20, T 100.0
 - Increased JVP
 - **Decreased fremitus, crackles, and bronchophony over RLL**
 - **Trace ankle edema bilaterally**

- **Laboratory findings:**

- Electrolytes: Na⁺ 133, K⁺ 5.3, Cl 101, CO₂ 20
- **BUN 45 mg/dL, creat 3.8 mg/dL, glucose 200 mg/dL**
- Hb 11.5, **WBC 14,000**

- Urine dipstick:**

- SG 1.010
 - Protein 1+
 - Glucose 1+
-

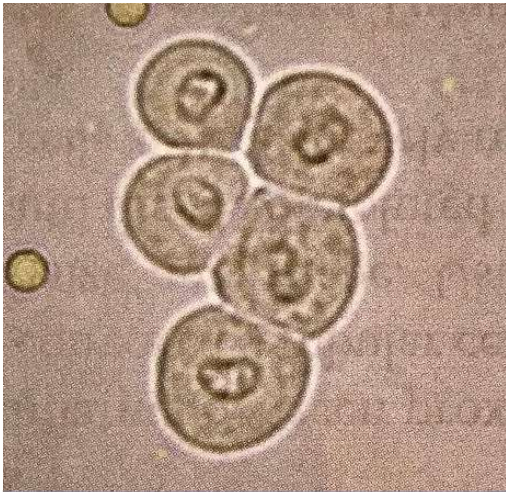
What cell type would you expect to predominate on microscopic exam of the urine?

- A. White blood cells
 - B. Red blood cells
 - C. Transitional epithelial cells
 - D. Lipid-laden macrophages
 - E. Renal tubular epithelial cells
-

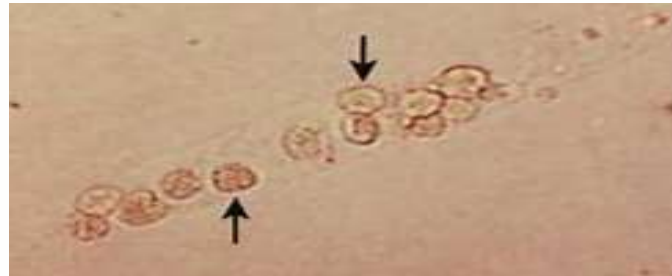
What types of casts would you expect to predominate on microscopic exam of the urine?

- A. Granular casts
 - B. White blood cell casts
 - C. Waxy casts
 - D. Red blood cell casts
 - E. Hyaline casts
-

Renal tubular epithelial cells and RTEC casts



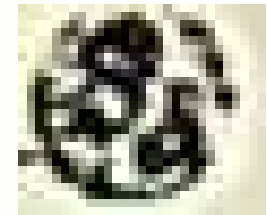
RTECs



RTEC casts



RTEC 15-30 μm

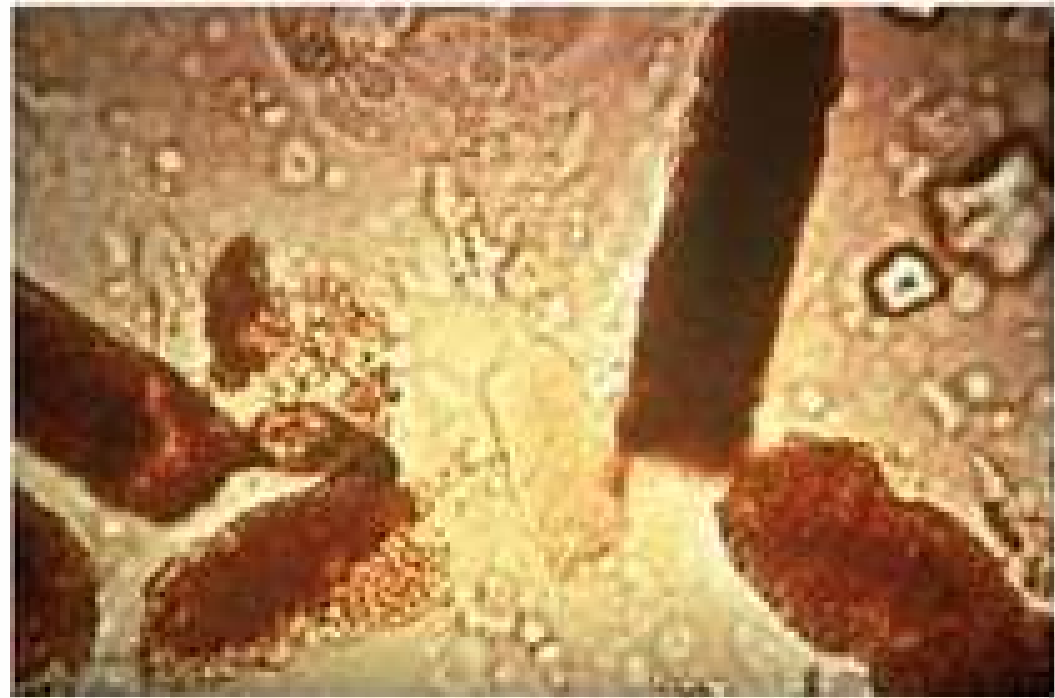


WBC 10-15 μm

Granular casts and muddy brown granular casts



Granular cast



Muddy brown granular cast

Based on the clinical scenario and urinalysis, what is the cause of this patient's acute kidney injury?

- A. Prerenal azotemia
 - B. Acute tubular necrosis
 - C. Acute interstitial nephritis
 - D. Acute pyelonephritis
-

Case 3

Clinical information/labs

- MRSA lobar pneumonia, on vancomycin
- Chronic kidney disease, creat 1.9, HTN, T2DM
- Acute ↑ BUN and creatinine: 45/3.8

Dipstick data

- SG 1.010
- Protein 1+
- Glucose 1+

+

Urine sediment

- RTECs
- RTEC casts
- Granular (muddy brown) casts



Diagnosis

Drug-induced acute tubular necrosis (ATN)

Quantitative Urine Microscopy Improves Diagnosis and Prognosis of ATN

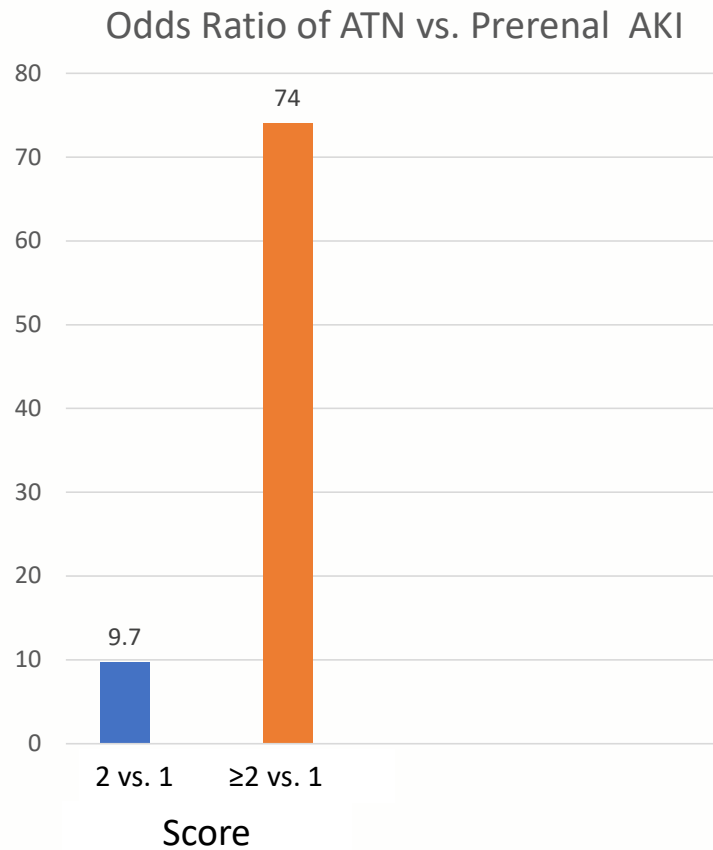
Scoring system for ATN based on number of RTE cells and granular casts

RTE cells per HPF	Granular casts per LPF		
	0 (0 points)	1-5 (1 point)	≥6 (2 points)
0 (0 points)	0	1	2
1-5 (1 point)	1	2	3
≥6 (2 points)	2	3	4

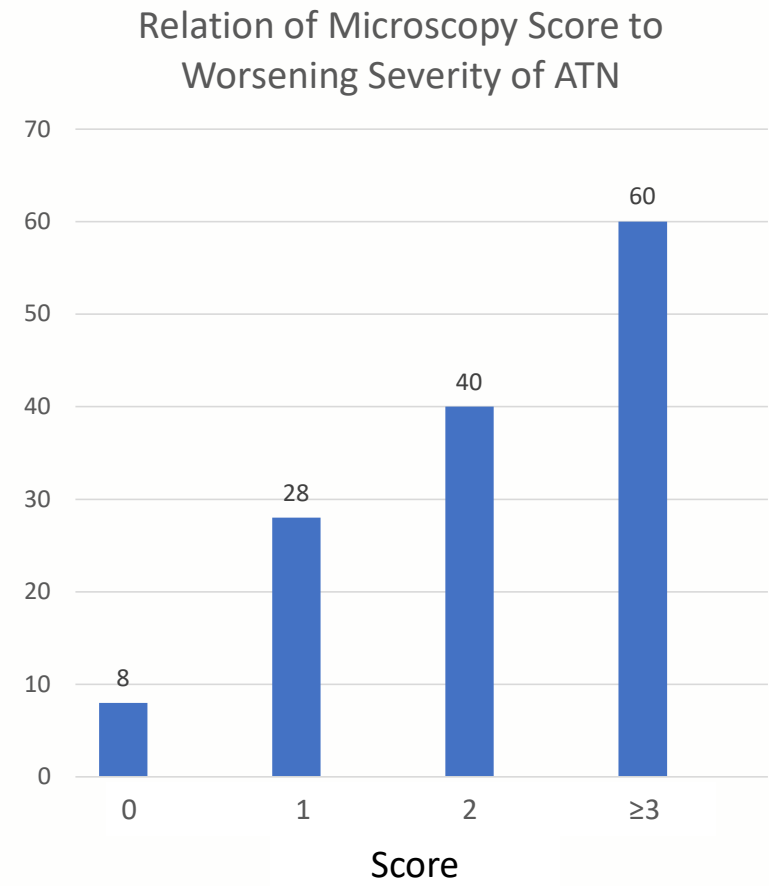
Perazella MA et al. CJASN 2008;3(6):1615-19

Perazella MA et al. CJASN 2010;5(3):402-08

Microscopy Improves Diagnosis of ATN vs. Prerenal AKI



Microscopy Predicts Worsening of ATN



Case 4

- HPI: 35-year-old African American man presents with gradually worsening lower extremity edema, fatigue, and anorexia over the past 3 months.
- PMH: Hypertension x 5 years, prediabetes x2 years
- Meds: Amlodipine
- PE: BP 146/85, P 80, R 14, T 98.6
 - HEENT: Periorbital puffiness, slightly pale conjunctiva
 - Neck: No JVD
 - Lungs: Clear except for dullness at the right base posteriorly with e→a change
 - Heart: NSR, no murmurs or gallops
 - Abdomen: No tenderness, masses or organomegaly
 - Extremities: 3+ edema in lower extremities extending to just below the knees

Case 4

- Laboratory findings:
 - Hb 10.5, WBC 8,000, platelets 240,000
 - BUN 30 mg/dL, creatinine 2.5 mg/dL
 - LDL cholesterol 200 mg/dL, Triglycerides 170 mg/dL
 - Serum albumin 2.5 g/dL

Urine dipstick

- SG 1.014
- Protein 4+
- LE neg
- Blood neg

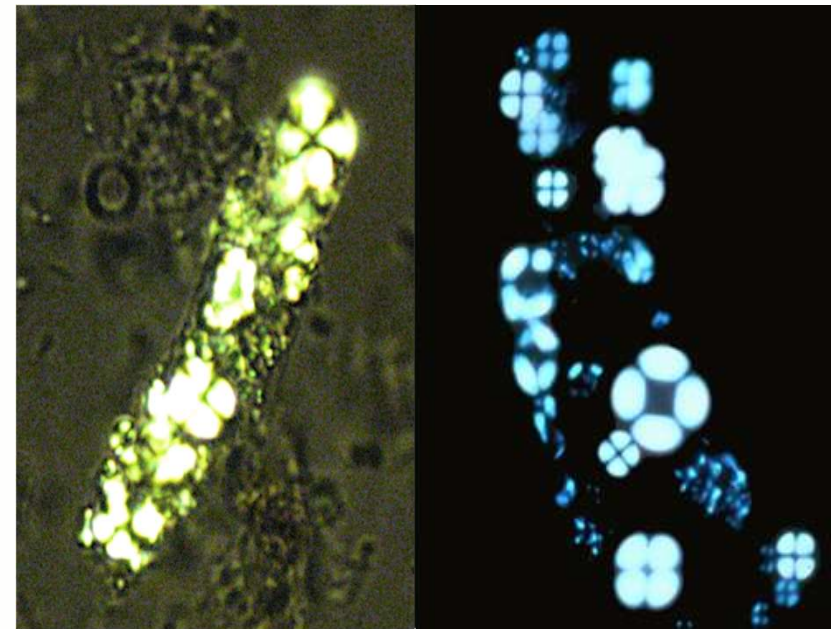
What cell type would you expect to predominate on microscopic exam of the urine?

- A. White blood cells
 - B. Red blood cells
 - C. Transitional epithelial cells
 - D. Lipid-laden macrophages
 - E. Renal tubular epithelial cells
-

What types of casts would you expect to predominate on microscopic exam of the urine?

- A. Granular casts
 - B. Fatty casts
 - C. Waxy casts
 - D. Red blood cell casts
 - E. Hyaline casts
-

Oval fat bodies (lipid-laden macrophages or RTECs) and fatty cast



Case 4

Clinical information/labs

- African American male
- Progressive edema, fatigue, anorexia
- Kidney disease, HTN
- Anemia, hyperlipidemia, hypoalbuminemia

Dipstick data

- Protein 4+

+

Urine sediment

- Oval fat bodies
- Fatty casts

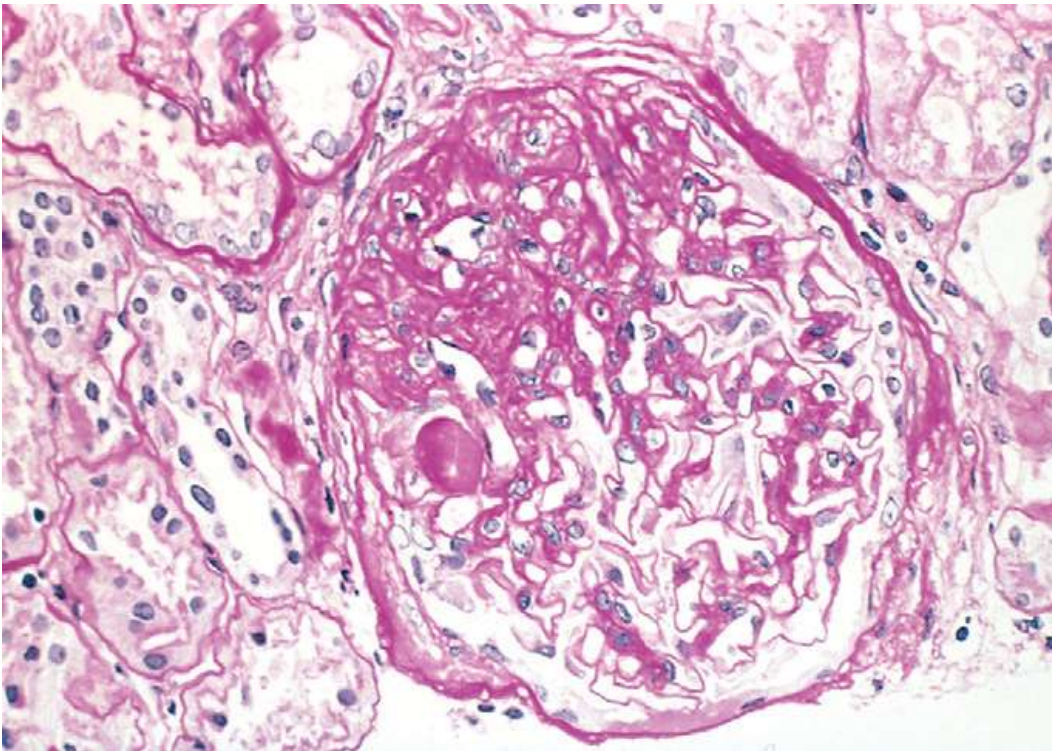


Diagnosis

Nephrotic syndrome

(most likely due to focal segmental glomerulosclerosis)

Nephrotic syndrome



Focal segmental glomerulosclerosis

Clinical features

- Hypoalbuminemia
 - Edema
 - Hypovolemia
- Hyperlipidemia
- Lipiduria

Pathologies*

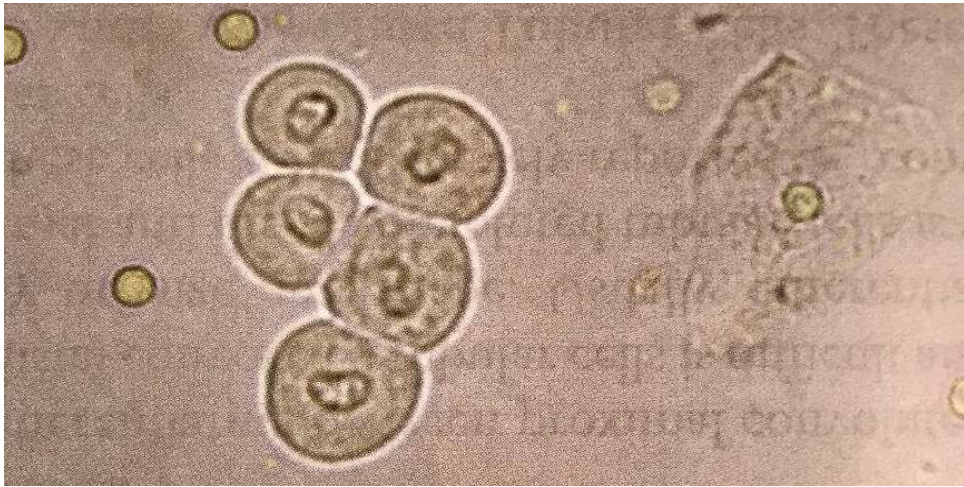
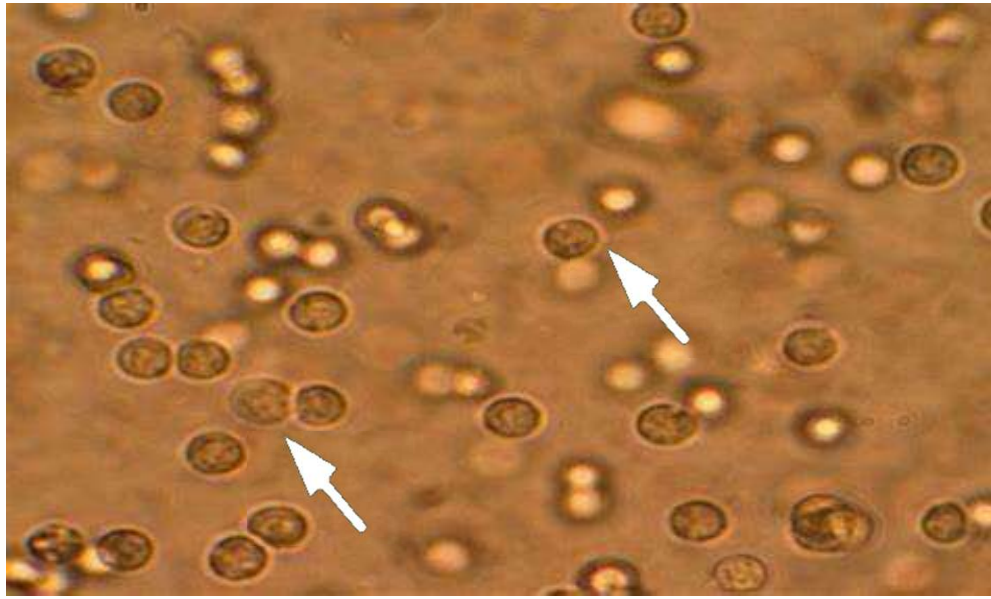
- Minimal change disease
- Focal segmental glomerulosclerosis
- Membranous glomerulopathy

*Usually immunologically mediated

*May be primary or secondary

Case 5

- **HPI:** 65-year-old female presents to her PCP with new onset low grade **fever**, malaise, **joint pains**, and a **rash** on her chest and upper extremities.
She has just completed a two-week course of **Bactrim** therapy for a severe UTI. Her baseline serum creatinine is 1.2, but now is 1.7 mg/dL.
- **PMH:** Hypertension, osteoarthritis, GERD
- **Meds:** HCTZ, naproxen, omeprazole
- **Laboratory Findings:**
 - Electrolytes: Na⁺ 138, **K⁺ 5.5**, Cl 104, CO₂ 24
 - **Hb 11.0**, **WBC 11,000**; 72% neut, 22% lymph, **5% eos**, 1% baso
 - BUN 25, **creatinine 1.7**
- **Urine dipstick:** SG 1.015, pH 5.5, **protein 1+**, **blood 1+**, **LE 2+**



Based on the clinical scenario and urinalysis, what is the cause of this patient's acute kidney injury?

- A. Prerenal azotemia
 - B. Acute tubular necrosis
 - C. Acute interstitial nephritis
 - D. Acute pyelonephritis
-

Case 5

Clinical information/labs

- Elderly female with recent UTI, on Bactrim
- Fatigue, fever, rash, arthralgias
- Acute kidney injury
- Mild anemia, leukocytosis, mild ↑ eosinophils

• Dipstick data

- Protein 1+
- Blood 1+
- LE 2+

+

Urine sediment

- WBCs, WBC casts
- RBCs (isomorphic)
- RTECs, RTEC casts



Diagnosis

Drug-induced Acute Interstitial Nephritis (AIN)

Lack of specific clinical or laboratory features for diagnosing AIN

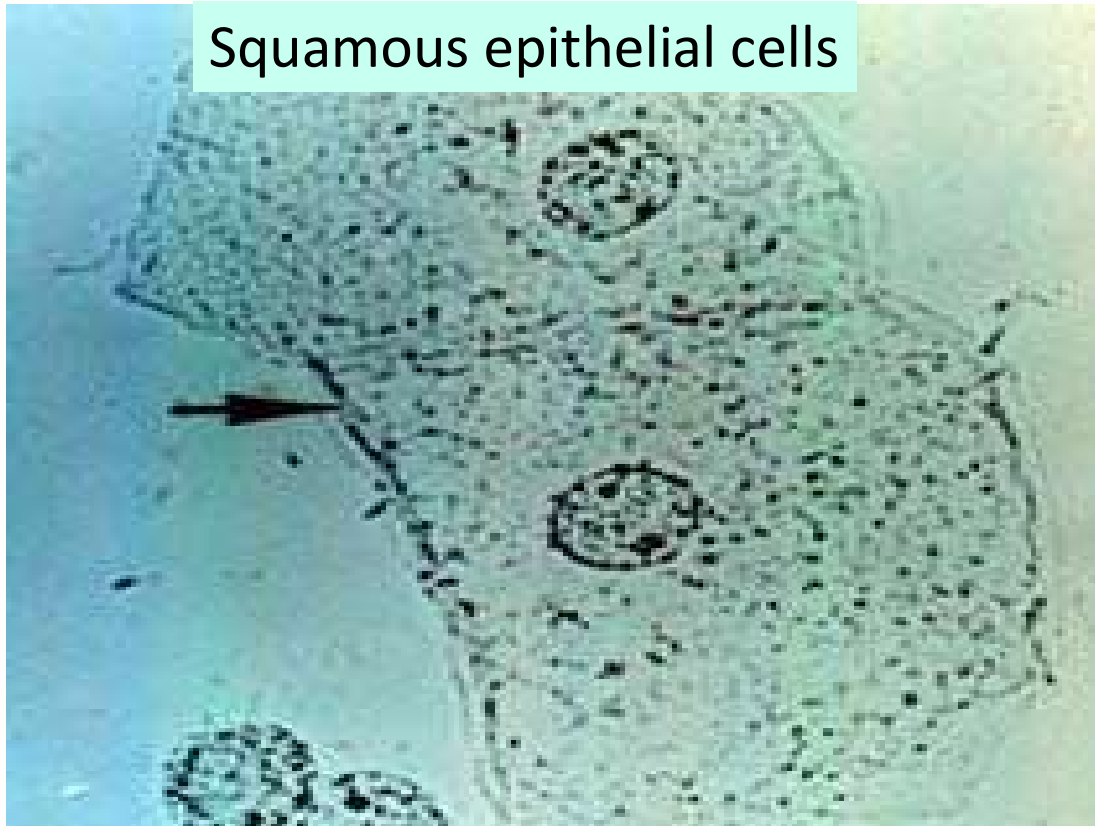
	Feature	Drug-induced (%)	Other causes (%)
<p>133 patients with biopsy-proven AIN studied at Mayo Clinic</p> <p>Muriithi AK et al. AJKD 2014; 64(4):558-66</p> <p>Renal biopsy is necessary to make the Dx of AIN</p>	Fever	20	8
	Rash	22	3
	Eosinophilia	23	6
	Triad of fever, rash, eosinophilia	10	0
	Eosinophiluria	38	15
	Hematuria	34	21
	Proteinuria	91	95
	WBCs in urine	47	45
	WBC casts	4	0

Leading Causes of Acute Interstitial Nephritis

- Drugs (71%)
 - Antibiotics (35%)
 - Penicillins, fluoroquinolones, cephalosporins, sulfonamides
 - Proton pump inhibitors (10%)
 - NSAIDs (7%)
- Autoimmune (20%)
 - Sarcoidosis, Sjogren syndrome
- Infections (4)
 - Bacterial, viral, fungal

Other cellular elements

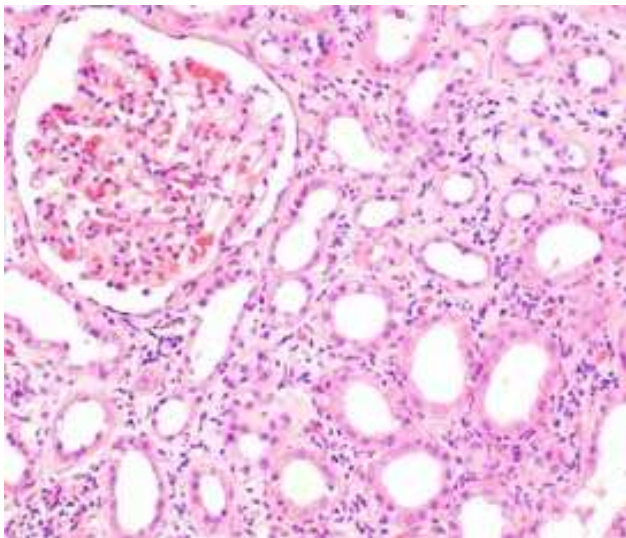
Squamous epithelial cells



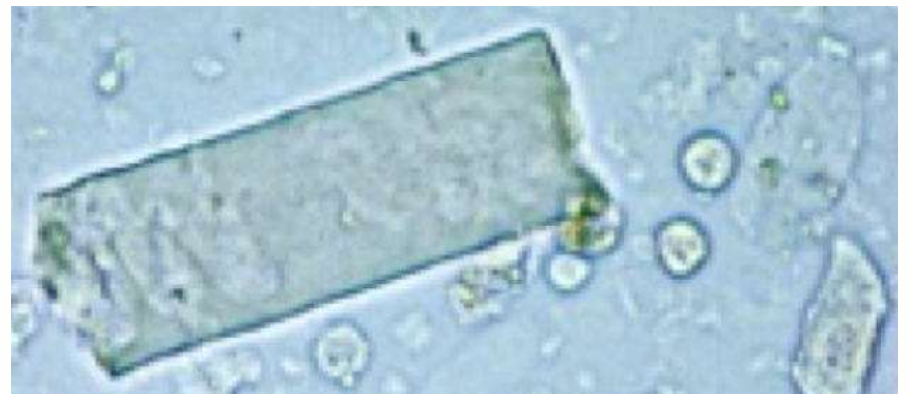
Transitional epithelial cells



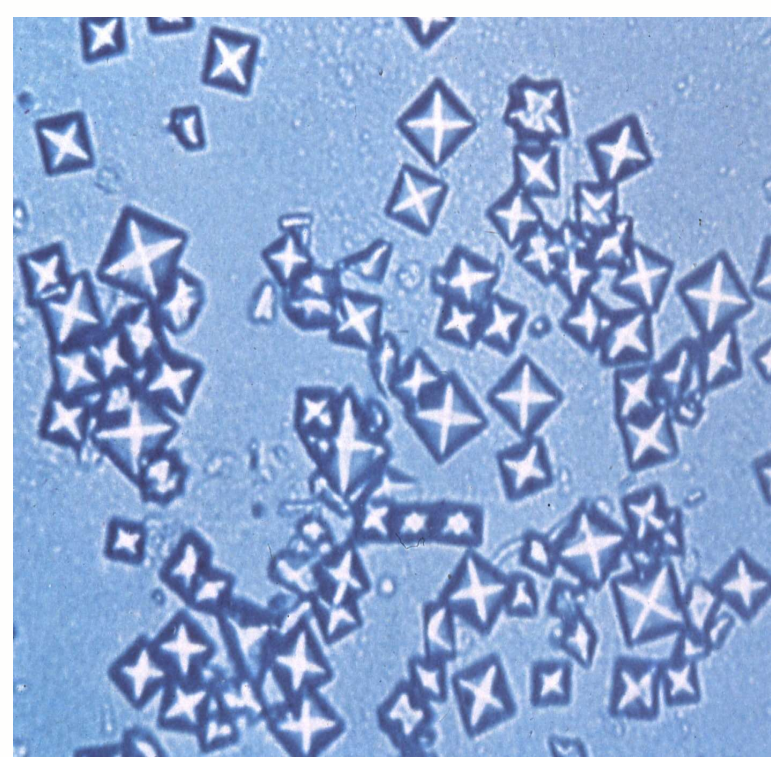
Waxy casts (Renal failure casts)



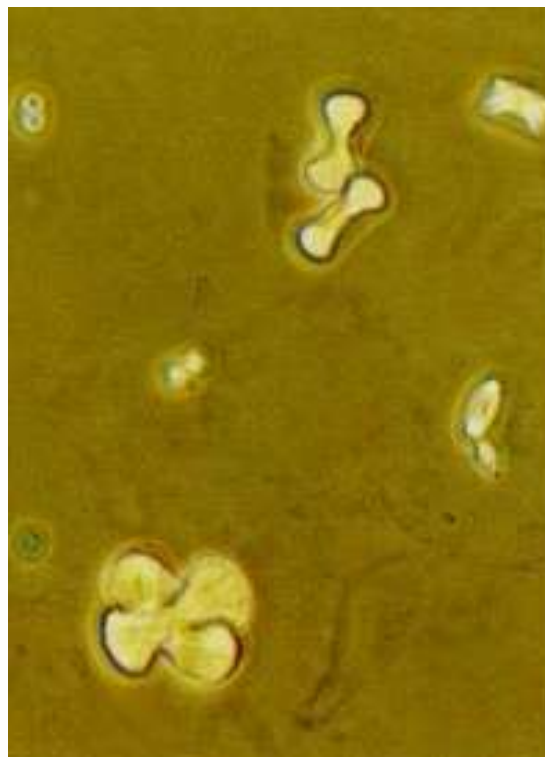
End-stage kidney disease biopsy



Endogenous Crystals



CALCIUM OXALATE
dihydrated (U-pH < 5.4 -6.7)

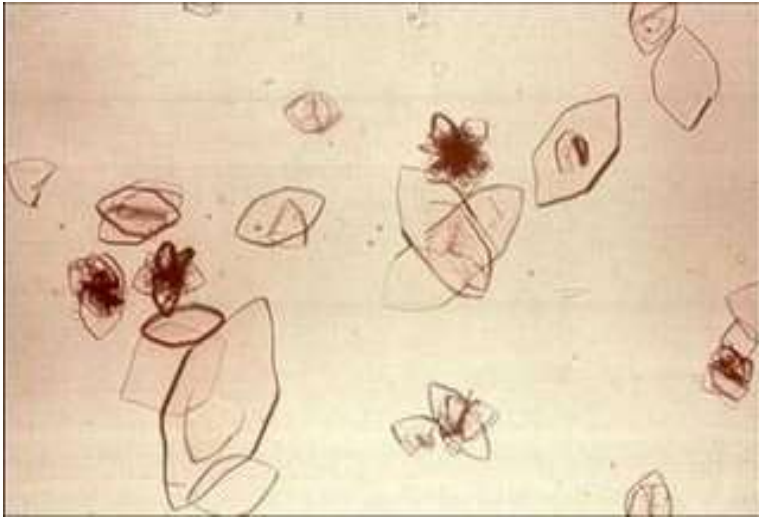


CALCIUM OXALATE
monohydrated (U-pH < 5.4 -6.7)

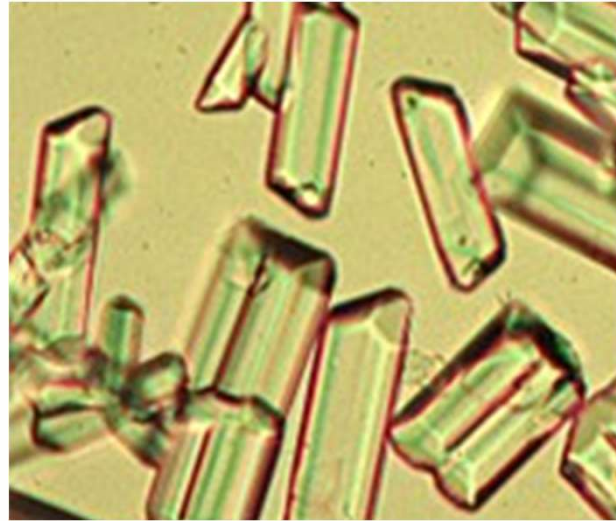


CALCIUM PHOSPHATE
rosettes and pointed fingers (U-pH ≥ 7.0)

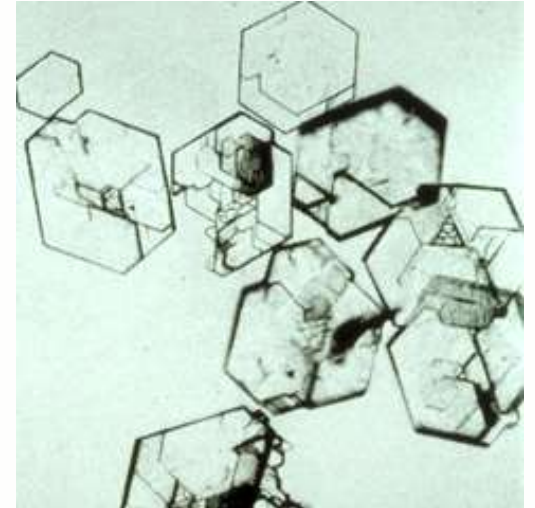
Endogenous Crystals



URIC ACID (U-pH ≤ 5.4)



TRIPLE PHOSPHATE (U-pH ≥ 7.0)

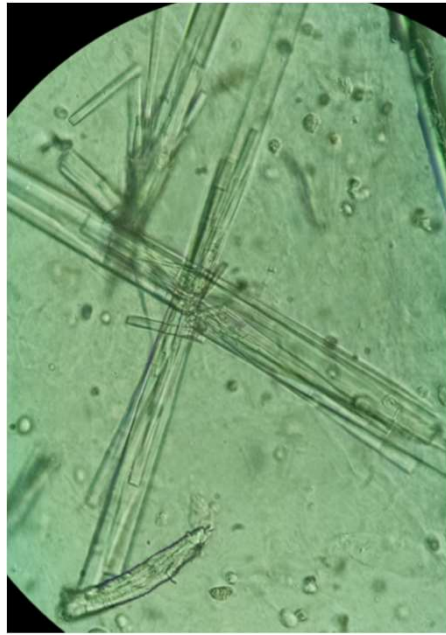


Cystine (U-pH $< 5.4 - 6.0$)

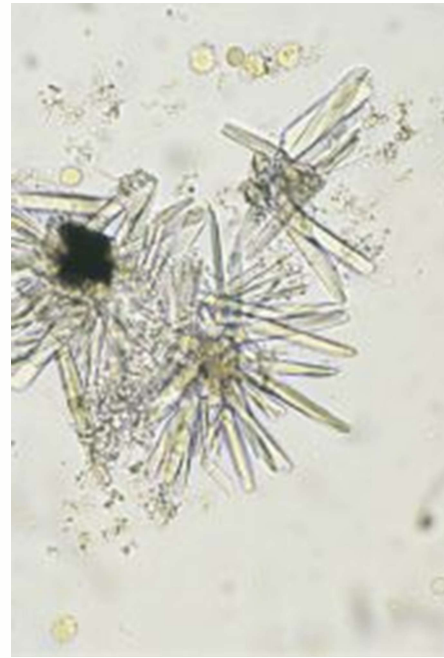
Drug Crystals



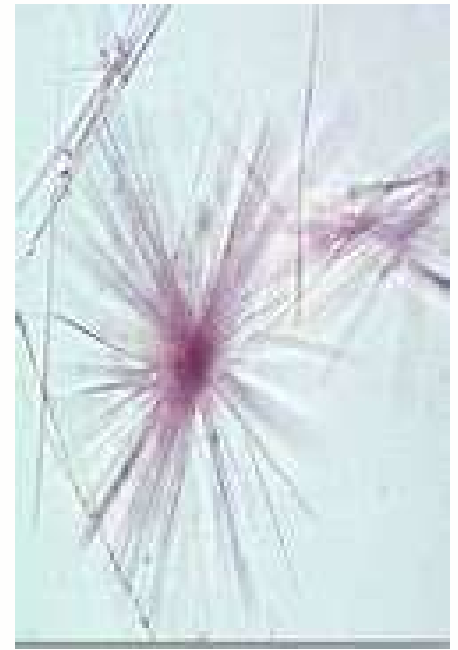
Sulfonamide



Acyclovir



Ciprofloxacin



Amoxicillin

Summary of Urinalysis Abnormalities

Kidney Disorder	Urine Dipstick	Urine Sediment
Prerenal azotemia	-/+ protein	Hyaline casts, few granular casts, occasional RTECs
Acute tubular necrosis	-/+ protein	RTECs, RTEC casts, granular +/- muddy brown granular casts
Acute interstitial nephritis	-/+ protein, +/++ LE, +/++ blood	WBCs, WBC casts, RTECs, RTEC casts, RBCs
Nephritic syndrome	+ /++ protein, +/++ LE, ++/+++ blood	Dysmorphic RBCs, acanthocytes, RBC casts, WBCs, WBC casts
Nephrotic syndrome	+++ /++++ protein	Oval fat bodies, lipid droplets, lipid-laden casts
End-stage CKD	-/+ protein, -/+ LE	Waxy casts, hyaline/granular casts

Take home points

- Despite modern diagnostic technologies, urinalysis remains a very useful tool to diagnose a wide variety of acute and chronic kidney diseases.
- The urine sediment compares favorably with other biomarkers that can distinguish between prerenal and intrinsic renal causes of acute kidney injury.
- Hallmarks of glomerular injury are dysmorphic RBCs and RBC casts (nephritic syndrome) and oval fat bodies (nephrotic syndrome).
- Hallmarks of tubular injury are renal tubular epithelial cells, renal tubular epithelial cell casts and granular casts.

References

- Cavanaugh C, Perazella MA. Urine sediment examination in the diagnosis and management of kidney disease: core curriculum 2019. *Am J Kidney Dis* 2018;73(2):258-272.
- Fogazzi GB, Verdesca S, Garigali G. Urinalysis: core curriculum 2008. *Am J Kidney Dis* 2008;51(6):1052-67.
- Ringsrud KM. Casts in the urine sediment. *Lab Med* 2001;32(4):191-93.
- Perazella MA. The urine sediment as a biomarker of kidney disease. *Am J Kidney Dis* 2015;66(5):748-55.
- Perazella MA, Coca SG, Kanbay M, et al. Diagnostic value of urine microscopy for differential diagnosis of acute kidney injury in hospitalized patients. *Clin J Am Soc Nephrol* 2008;3:1615-19.
- Perazella MA. Clinical approach to diagnosing acute and chronic tubulointerstitial disease. *Adv Chronic Kidney Dis* 2017;24(2):57-63.
- Perazella MA, Coca SG, Hall IE, et al. Urine microscopy is associated with severity and worsening of acute kidney injury in hospitalized patients. *Clin J Am Soc Nephrol* 2010;5:402-08.
- Muriithi AK, Leung N, Valeri AM, et al. Biopsy-proven acute interstitial nephritis, 1993-2011: A case series. *Am J Kidney Dis* 2014;64(4):558-66.
- Martin C. Urinalysis using a test strip. *Brit J Nurs* 2019;28(6):336-340.
- Wald R. Urinalysis in the diagnosis of kidney disease. UpToDate. Accessed Jan 7, 2021.

Questions.....



Harvey Feldman, MD
hfeldman@nova.edu